



**2013
2014**

**ANNUAL
REPORT**

Acknowledgement

The Aboriginal Child, Family and Community Care State Secretariat (AbSec) would like to acknowledge that our work is conducted on the land of the Aboriginal nations of NSW.

We pay our respects to the Elders, both past and present and to those of the future, for they hold the memories, the traditions, the culture and aspirations of the Aboriginal Community.

Contents

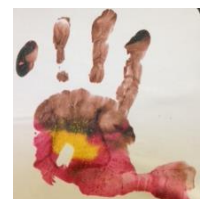
Who we are.....	4
Partnerships.....	5
AbSec Structure.....	6
Chairpersons Report.....	7
Chief Executive Officer Report.....	9
Early Intervention and Out-of-Home Care.....	11
Intensive Family Based Services (IFBS).....	12
Aboriginal Family Group Conferencing.....	13
Aboriginal Family Group Conferencing Diploma Course.....	14
Protecting Aboriginal Children Together (PACT).....	15
Transition.....	17
Aboriginal Consultation Guide.....	19
Training and Support.....	20
Aboriginal Jobs Together (AJT).....	24
Stolen Generations Council NSW/ACT Inc.....	25
Disability Capacity Building Project.....	31
AbSec Workers Conference 2013.....	33
AbSec Conference 2014.....	34
Contact Us.....	36
Audited Financial Statements.....	37

Who we are

The Aboriginal Child, Family and Community Care State Secretariat (AbSec) is a not-for-profit incorporated community organisation. The organisation is primarily funded by the NSW Department of Family and Community Services and is recognised as the peak NSW Aboriginal organisation providing child protection and out-of-home care policy advice on issues affecting Aboriginal children, young people, families and carers.

Aims and Objectives

- To assist Aboriginal communities in their goals to achieve self-determination and create a safe, secure and caring environment for their children and young people.
- To provide support, information and networking opportunities for Aboriginal agencies providing care and protection services for children and young people.
- To advise the Government, key Departments and agencies on issue impacting Aboriginal children and families.
- To provide advice on child protection and out-of-home care policy
- To provide advice to the Department of Family and Community Services, Community Services on issues for Aboriginal families involved in child protection and out-of-home care services
- To provide a communication mechanism between Aboriginal member agencies, communities, government departments and non-government organisation's on issues affecting Aboriginal children and young people, their families and communities.



Partnerships

AbSec would like to acknowledge our corporate partners and funders, the Department of Family and Community Services, Community Services (CS) - our primary funding body who have demonstrated a real commitment to lead business with Aboriginal people across NSW in a culturally appropriate way.

We would especially like to acknowledge the support offered by Mr Michael Coutts-Trotter, Secretary, Department of Family and Community Services, Ms Maree Walk, Chief Executive, Community Services, Mr Jim Longley, Chief Executive Ageing, Disability and Home Care and our brothers and sisters at the Aboriginal Services Branch and those on the Aboriginal Reference Group.

We would like to thank OATSIH, the Department of Prime Minister and Cabinet and Mr Richard Weston, Chief Executive Officer, Healing Foundation for the funding they have made available to the Stolen Generations Council of NSW/ACT.

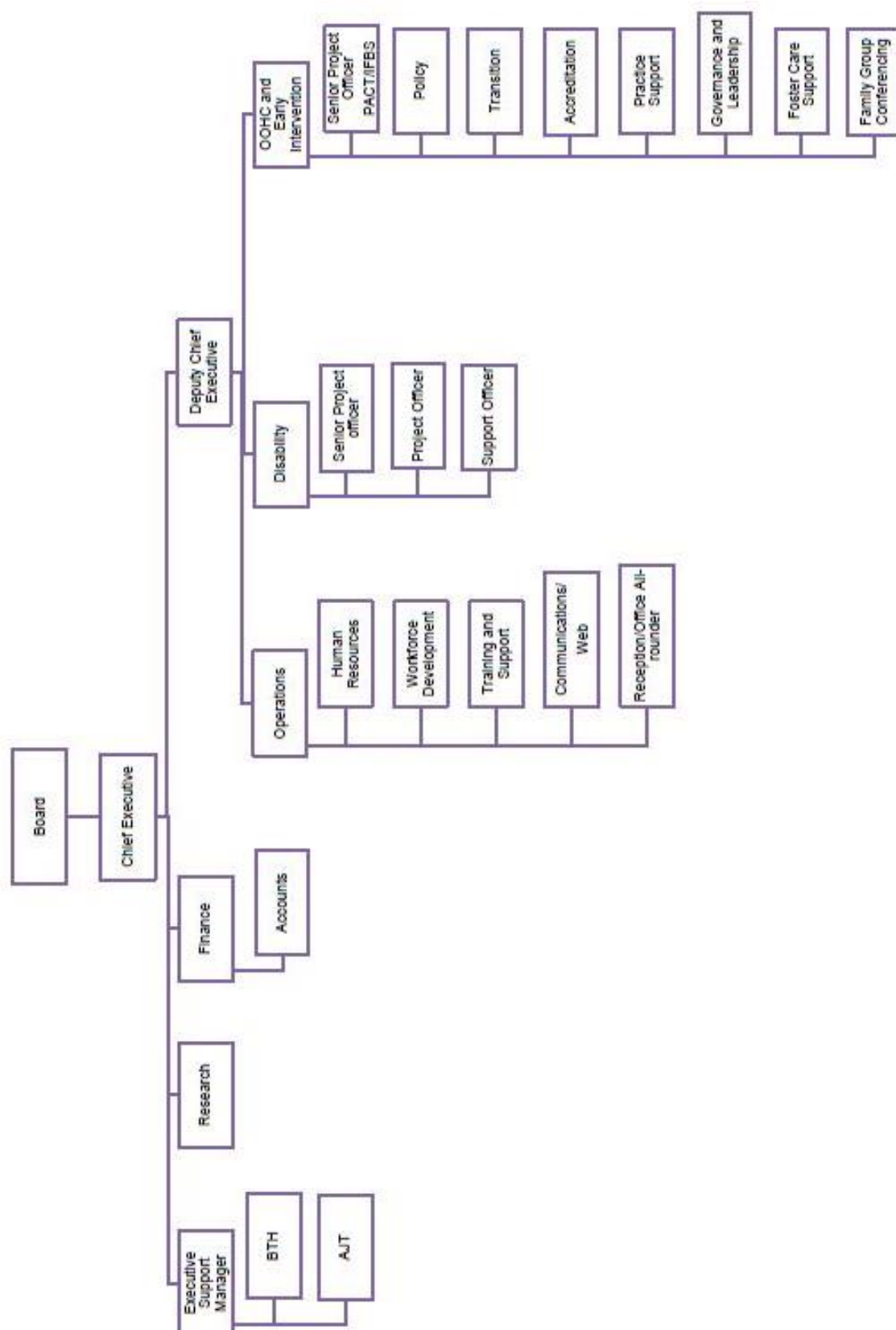
AbSec continues to work proactively with the NSW Government and acknowledge the support of the Hon. Gabrielle Upton MP, Minister for Family and Community Services, the Hon. Victor Dominello MP, Minister for Citizenship and Communities, Minister for Aboriginal Affairs and Hon. John Ajaka MLC, Minister for Ageing, Minister for Disability Services in expanding support of NSW Aboriginal Communities.

Thank you to Andrew McCallum, Wendy Foote and the ACWA team for their ongoing commitment to AbSec.

We thank ACWA board members for their support and resolve on issues affecting Aboriginal children and young people.



AbSec Structure 2014



Chairperson's Report

It's hard to believe that another year has passed and once again I sit to reflect on the past 12 months as the Chairperson of the Aboriginal Child, Family, and Community Care State Secretariat (AbSec). So much has happened; it's hard to collect all my thoughts on what have been the major highlights of 2013/2014.

Angela Webb continues to lead AbSec, her drive and passion are evident in the way we now do business. Ange has a keen eye on the directions and trends, therefore leading our organisation to view the world as a bigger place, without siloing ourselves to just the out of home care sector. Angela's vision is one of a more holistic approach to our Aboriginal children and family's needs and growing AbSec to be a real leader in enabling and supporting positive changes for our Aboriginal families. Well done Angela for your vision and hard work.

This year has seen the end of the "Transition Team" per say and the restructure of AbSec as an organisation. Funding for various projects ceased this year, and we have seen Nick Corrigan finish his time with us and moved onto bigger and better things and Tracey Keevers-Keller position finish as well. We thank both Tracey and Nick for their valuable contribution to AbSec and our growth.

Our out of home care sector continues to grow and develop, we now have eleven accredited agencies and nine partnership agencies, with 945 Aboriginal children and young people cared for by Aboriginal agencies. This is a huge achievement and something we as member agencies should be proud of, AbSec has done a remarkable job in building the capacity of Aboriginal agencies to respond to the challenge.

It was with great relief that we saw a further two year funding for the PACT and IFBS programs, after the cessation of the KTS funding. These programs will now be able to further develop their services to deliver better services to our families, hopefully reducing the amount of our children entering the out of home care area.

This has been a year of trying to keep up with an ever changing landscape; issues change daily, making it difficult to stay abreast of every change. At times it seems to be very demanding and tiring, but, it is also what we have always wanted, to play a significant role in informing government about the needs of our children, young people, and families. The change of federal government has seen a very different direction taken; we now must fight for everything that is on the table. No longer is it a given that funding will be available for Aboriginal issues as it was in the past. Our very existence has been achieved through the hard work, commitment, and persistence, of

Angela and the staff, and the Board thank you all for this.

The next twelve months will again see a climate of unpredictable, and moving goal posts, with a working environment that appears always being a step behind or uninformed, but in reality, what will be different for us. As Aboriginal people that is how we have lived our whole lives, never quite knowing the full truth or what the hidden agendas are. We can be assured whatever the next 12 months

bring, AbSec will be at the forefront, driving home the message of our children, young people and families' needs and ensuring transparency in issues related to our Aboriginal families by holding government and bureaucrats to task.

Dana Clarke
Chairperson



Chief Executive Officer's Report

AbSec has been working on a range of programs which are important to the self-determination of Aboriginal people and our communities.

It hasn't always been easy, especially when funding is restricted for important programs. This year we saw the loss of our Peer Support Program, one of the many important programs that support carers of Aboriginal children and young people. However our commitment is ongoing as AbSec recognises that carers play an important role in the lives of our kids. AbSec strives to support our carers via our Foster Care line and training.

The Aboriginal Family Group Conferencing pilot has had its challenges but we have worked hard with key stakeholders to overcome these issues to ensure such a vital program stays on track.

We are excited to have begun working in the disability sector; this work will be life changing for our people to ensure they access appropriate services and supports. Aboriginal people with disability should not feel shame like they have for a number of years. Our families are entitled to services to make life more inclusive.

Our out-of-home care agencies have been working very hard going through the accreditation and re-accreditation process.

I recognise the strength of our Aboriginal Community Controlled Organisations means the sector, strong sense of community.

I acknowledge the work we do with the Stolen Generations Council NSW/ACT and how their contributions have given AbSec perspective.

I take this opportunity to thank AbSec board members for their hard work and dedication to providing leadership, guidance and advice has been valuable to AbSec staff and particularly myself.

I would like to commend the AbSec team on their hard work and dedication. It's your passion and commitment which see AbSec being a proactive advocate on issues impacting Aboriginal children, young people, families and communities.

The child protection sector is forever changing and the future for Aboriginal children and young people in the system need to be raised strong in culture and identity.

AbSec will continue working with the Department of Family and Community Services (FACS) as we navigate legislation reforms and implementation while they move to OneFACS.

I would like to thank our non-government partners, especially ACWA for their support and commitment. AbSec is looking forward to collaborative efforts in the sector for the future as well as building on relationships with other NGO partners.

Government departments can learn something from our ancestors; I see that FACS has with their co-design models and working as a collective. This is something that our mob has been doing for years; it's the way Aboriginal communities continue to work today.

Something to think about as we move forward...



Angela Webb
Chief Executive Officer

**Our strength as an
Aboriginal collective
ensures our voice
has an impact in what
is best for our
children, young
people and
communities.**

Early Intervention & Out-of-Home Care

AbSec oversees a number of Early Intervention Pilot programs which are initiated from the Special Commission of Inquiry into Child Protection Services in NSW and Keep Them Safe.

Keep Them Safe (KTS) is the NSW Government's response to the Special Commission, is a five-year plan to improve the safety and wellbeing of children and young people in NSW and includes actions to support and work with Aboriginal children and families and to reduce the number of Aboriginal children coming into contact with the child protection system.

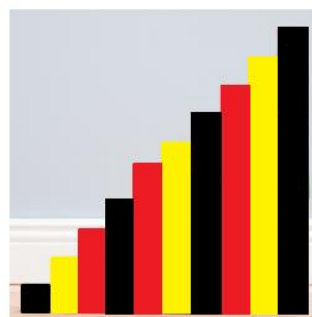
Protecting Aboriginal Children Together (PACT), Aboriginal Family Group Conferencing (AFGC) and Intensive Family Based Services (IFBS) are Early Intervention programs which AbSec is

Since 2011, AbSec was funded by the Department of Family and Community Services for the creation of a Transition team to coordinate transition implementation activities and specifically assist in building the capacity of Aboriginal out-of-Home Care agencies.

The aim of the funding was to build a sustainable Aboriginal Community Controlled Out-of-Home Care sector able to transition all Aboriginal children and young people in statutory care from Community Services to Aboriginal non-government organisations.

Building the role and capacity of Aboriginal Community Controlled Organisations is not only important for effective service delivery, but is an important policy objective in its own right as it promotes local governance, leadership and economic participation, building social capacity for Aboriginal people.

AbSec believe Aboriginal children and young people be cared for by Aboriginal carers and Aboriginal caseworkers within accredited community-controlled Aboriginal agencies is the best possible outcome for Aboriginal communities. That's why AbSec is committed to the transition of our children and young people to Aboriginal non-government organisations.



Intensive Family Based Services (IFBS)

Intensive Family Based Services (IFBS) provides an intensive, time-limited (12 week) service to Aboriginal families in crisis within the child protection system; at the high end of a service continuum where out-of-home care is likely, or will continue, without significant change in parental behaviours and in the safety of the environment for children and young people concerned.

The model also includes a step-down service, providing less intensive case management support for up to six months following the intensive crisis service.

There are four IFBS NGO-based services established in high-need areas across NSW

- Kempsey – Burrum Dalai Out-of-Home Care and Family Support Services
- Wyong – Bungree Aboriginal Corporation
- Wagga Wagga – Riverina Medical and Dental Aboriginal Corporation
- Clarence Valley – Bulgarr Ngaru Aboriginal Medical Service

Each of the four IFBS agencies above received continued funding this year (2014/15) til June 2016. This is a reflection of the tireless work and commitment by staff and the agencies in ensuring our most vulnerable are supported.

During this reporting period 99 families were referred for service with 248 children and young people. Approximately 60% of families referred to the IFBS program have completed.



Aboriginal Family Group Conferencing (AFGC)

The Aboriginal Family Group Conferencing program is in response to the Report of the Special Commission of Inquiry into Child Protection Services in NSW (the Wood Report) recommended that adequate funding be provided so that alternative dispute resolution is used prior to and in care proceedings.



Aboriginal Family Group Conferencing is based on the Dhum Djirri model (Aboriginal Family Decision making model in Victoria) however the AbSec model was developed based on the New Zealand Family Group Conferencing model.

Aboriginal Family Group Conferencing provides Aboriginal families, who are currently case managed by the Department of Family and Community Services, Community Services (FaCS), with an opportunity to discuss what needs to be done to achieve improved safety and protection of their children and young people.

The purpose of AFGC is to encourage relevant family members and others to meet and work toward an agreed way forward in order to address any risk and or safety concerns as advised by FaCS.

AFGC is about involving appropriate family members in the development of a 'Family Plan' which is agreed to by the family and FaCS. A Conference is organised to assist in the development of this Family Plan.

All Conferences involve an independent facilitator who is employed by AbSec.

The facilitator (AFGC Officer) works throughout the entire process including the Conference itself and involves working with the family in developing the strategies to be included in the Family Plan.

This program is being piloted in Wyong, Shellharbour, Grafton and Broken Hill Community Service Centres.

AbSec has been working with Aboriginal community groups and services to raise awareness of the AFGC program by presentations and pamphlet distribution.

The AFGC program has encountered many challenges but AbSec has worked with Community Services, the Aboriginal community and key stakeholders to continue to progress the program with minimal impact.



Aboriginal Family Group Conferencing Certificate IV Course

AbSec has partnered with the Aboriginal Learning Circle and TAFE NSW to develop the Certificate IV in Community Services (Aboriginal Family Group Conferencing) course.

The course will enable participants to develop skills and knowledge to undertake a range of tasks associated with the organisation and coordination of Aboriginal Family Group Conference meetings, relative to addressing care and protection issues for Aboriginal children and young people at risk in the community services sector.

The course targets Aboriginal and Torres Strait Islander community members who have relevant minimum Certificate III level qualifications, and a minimum 3 years of community services industry experience.

The program which is being held in Port Macquarie will require participants to attend four times one week blocks over four months starting early 2015.

This is a full time course and recognition of prior learning will be offered to all participants.

Through an expression of interest process there are currently 17 participants enrolled in the course.

If anyone is interested in knowing more about the course or are interested in enrolling, please contact Michael Higgins on 9559 5299. Places are limited. There is no cost to participants however; leave from employer to attend face-to-face sessions in 2015 is required.



Protecting Aboriginal Children Together (PACT)

Protecting Aboriginal Children Together (PACT) was developed by the NSW Department of Family and Community Services, Community Services (FACS) and the Aboriginal Child, Family and Community Care State Secretariat (AbSec). It is based on Victoria's 'Lakidjeka' program which has been running for 20 years using cultural advisers employed by the Victorian Aboriginal Child Care Agency (VACCA).

The aim of PACT is to ensure there is an Aboriginal perspective when it comes to making key decisions about the care and protection of Aboriginal children and young people. PACT does this by having Aboriginal cultural advisers work alongside FACS caseworkers. This gives caseworkers a deeper understanding of Aboriginal culture. It also helps open the way for Aboriginal families to take a role in decisions which affect them and their children.

The model is being piloted in two sites—Shellharbour and Moree—since 2011. Other FACS Community Service Centres (CSCs) around NSW continue to use other models of internal and external consultation to meet requirements for self-determination within the *Children and Young Persons (Care and Protection) Act 1998*.

PACT targets Aboriginal children and young people who are the subject of a risk of significant harm (ROSH) report that is allocated to a participating CSC for further assessment or intervention. For the period of the pilot, all reported

children and young people who meet the following criteria were to be offered a PACT service:

- Aboriginal or Torres Strait Islander
- allocated to the CSC child protection team for further action
- no other open case plan.

Eligibility is determined during the CSC intake process and the outcome recorded as part of local intake procedures.

PACT covers all key decision-making points in a child protection case. Once a case is allocated, the CSC refers the case to PACT and PACT is to respond within the relevant timeframe (based on risk level). The first step is a pre-assessment consultation between the CSC and PACT. If the family consents, PACT participates in the first home visit, safety assessment and risk assessment, and, if required, the case plan, risk re-assessment, care plan application, identification of carers, out-of-home care case plan and case closure.

Similar to other pilot programs, PACT has had some challenges in both sites however AbSec, Community Services and the local providers have worked together to overcome these issues.

Protecting Aboriginal Children Together (PACT) cont.

The pilot has received extended funding for two years which is a great outcome for the Moree and Shellharbour communities. It is also a reflection of the commitment and effort by PACT services and FACS staff.

In 2013, ARTD Consultants were commissioned to undertake an evaluation of the PACT program from its inception 2-3 years ago.

This evaluation was completed recently and highlighted the strengths and challenges in operationalising the model in each location. The evaluation found that there was still some development to occur in order to get the program fully operational and effective. The evaluation recommended the extension of the program's funding in order to allow for the model to be developed further.

Local Implementation Groups continue to oversee the local operations of the program in each location and work toward developing strategies to overcome and address challenges as they arise.

The focus of each PACT service over the next 18 months will be to strengthen its work with families and increasing the communication flow to and from the CSC in order to improve joint conversations around key decision-making points.

A final evaluation of the PACT pilot program will be undertaken in early 2015 and conclude around June 2015.

In 2013/14, Moree PACT service received 25 referrals involving 46 children and young people. For the same period, Shellharbour PACT service received 39 referrals involving 90 children and young people.

Transition

The work undertaken by the out-of-home care agencies is important to the care and protection of Aboriginal children and young people as this ensures that, wherever possible, Aboriginal children remain within their community and maintain their cultural connections. This is essential to ensure the healthy development and future of Aboriginal children and their communities. There are 945 Aboriginal children and young people who have transitioned to an Aboriginal out-of-home care provider, of an Aboriginal out-of-home care population of 4,283¹.

There are eleven accredited providers, nine partnerships² that AbSec works with to provide a range of supports and services to assist the agencies. At the commencement of the AbSec Transition program there were 325 Aboriginal children and young people placed with Aboriginal out-of-home care agencies.

However by March 2014, 803 Aboriginal children and young people transitioned from Community Services placements to Aboriginal out-of-home care agencies.

When work originally began there were seven agencies contracted to provide general foster care placement at the beginning of the transition program and now there are 20 agencies in various stages of accreditation/re-accreditation process in the NGO sector.

AbSec provides a range of services and supports to the agencies from capacity building through to

governance and strategic partnership development support. AbSec tailors support and service offerings to agencies depending on individual agency need.

Capacity Building Outreach -

Providing ongoing support to prospective out-of-home care agencies through community consultation; negotiation with government and non-government organisations; service development advice and sector advocacy

NSW Standards for out-of-home care presentation –

assisting agencies to understand and work with the out-of-home care standards

Support with Provisional

Accreditation – supporting agencies to achieve provision out-of-home care accreditation

Direct Evidence and Casework

support – ongoing casework practice support – after provisional accreditation – to assist agencies through the monitoring phases and towards full accreditation



¹ Figures as at 30 June 2014

² Figures as at 30 June 2014

Transition continued

Capacity Assessment Framework – the capacity assessment, review and development framework and tool provides a structured process to assist agencies to determine their development needs

Governance Action Plan – assisting agencies to develop and review their governance practices through the presentation of the “Governance Top Ten Tips” which is specifically tailored to address out-of-home care requirements

Managing Allegations of Reportable Conduct – providing specialist expertise to support agencies in undertaking investigations and completing relevant reporting in line with statutory requirements

Complaint Management – assisting in policy development, staff training and facilitating local resolutions

Direct Advocacy - the team manager is able to advocate on behalf of the member agency to address issues such as funding, contracting, file transfer speed, referrals and consultation.

Foster Care Support and Training – Improve the information, support and training opportunities for carers of Aboriginal children and young people in NSW. AbSec provides the Aboriginal State-wide Foster Care Support Service which is a free

telephone advice and advocacy service for carers of Aboriginal children and supports our member agencies with Foster Care Recruitment activities including events and promotion.

Aboriginal Consultation Guide and Cultural Support Practice – provides members with support, information and training on Cultural Support Planning. The Consultation guide supports a standard and practical approach to Aboriginal identification, Aboriginal consultations and cultural support planning to assist the NGO sector to improve outcomes for Aboriginal and Torres Strait Islander children and young people



Aboriginal Consultation Guide (ACG)

The Aboriginal Consultation Guide (ACG) provides a practical framework to assist NGOs to work consistently, effectively and sensitively with Aboriginal children, young people, families and communities when providing out-of-home care services.

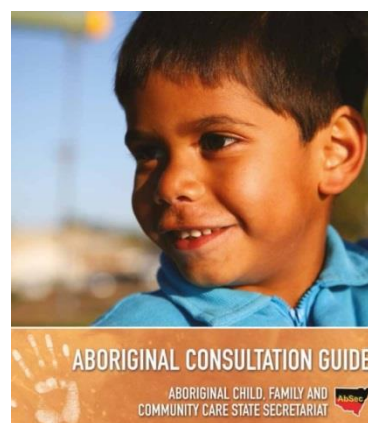
The ACG highlights the legislative requirements of the Children and Young Persons (Care and Protection) Act 1998 that specifically relate to Aboriginal and Torres Strait Islander people including self-determination, participation in decision making and the placement principles and provides practical advice to assist NGO's to apply these requirements in their day to day work with Aboriginal children and families.

The ACG supports a standard and practical approach to Aboriginal identification, Aboriginal consultations and cultural support planning to assist the NGO sector to improve outcomes for Aboriginal and Torres Strait Islander children and young people in out-of-home care.

The ACG was formally launched on 26 November 2013 followed by information workshops held across the state from May – June 2014 and were attended by 123 people with 133 copies of the ACG being distributed.

The information workshop's aims:

- Provide you with tools to assist you in engaging with Aboriginal children and young people, families and communities in a culturally appropriate and sensitively way
- Explore the practical use of the ACG, including how you can practically use the ACG in your workplace
- Build on your understanding of how to have effective relationships with Aboriginal children, young people, families and communities
- Reinforce the importance of Aboriginal consultation, to achieve the best culturally appropriate outcomes for Aboriginal children and young people.



Training and Support

The Training and Support team aimed to improve the information, support and training opportunities for carers of Aboriginal children and young people in NSW. This is so that carers are able to carry out their role to provide quality care and support to Aboriginal children and young people.

The **Aboriginal Carer Recruitment Roadshow** undertaken across the state was to help raise awareness of the need for more Aboriginal carers and assist with recruitment of Aboriginal carers for our agencies as well as Community Services. During these events AbSec found that community member's acknowledged the need for more carers in their own communities.

The Regional Carers Support Staff were working consistently to establish and maintain our **Carer Support Groups** during the past year. There were over 34 Carer Support Groups across the state with over 300 Carers attending.

The support Groups allowed Carers of Aboriginal Children to come together to support each other, as well as being supported by the AbSec Regional Carers Support Worker.



Carers would meet in an informal setting to discuss any issues, listen to guest speaker's talk about topics Carers are interested in, as well and participate in activities.

AbSec found the Carer Support Groups allowed the Carer to become better informed whilst caring for our kids, as well as being supported and connected to other Carers in their community.



In December 2013, AbSec's Training and Support team travelled down the south coast NSW to celebrate Christmas with AbSec Carer support groups, in Goulburn, Bega, Batemans Bay and Queanbeyan.

Lunch was provided for Carers and their children where everyone had a yarn and discussed what things they would like to get out of their support groups in the year to come. Chocolates were given to Carers, as a 'Thank You' and acknowledging their commitment as Carers, in providing for our Aboriginal children and young people who need safe and loving homes.

Training and Support continued



There are a small number of Carer Support Groups that indicated they would continuing to operate after 30 June 2014 however AbSec has been unable to ascertain if these groups are still operating.

The North Western Regional Carer Support Workers travelled through the North West Region of NSW to attend final support groups for 2013, and marking the occasion with Christmas Lunches for Carers to enjoy. Christmas Lunches for Carers were held in areas such as Wilcannia, Forbes, Coonamble, Bourke, Murrin Bridge and Narromine.



Unfortunately the Peer Support Program ceased on 30 June 2014 due to lack of funding. Our Regional Carer Support Workers farewelled Carers during the last Carer Support Groups held across NSW.

AbSec said farewell to Training and Support staff Tracey Keevers-Keller, Ms Debbie Skinner, Ms Julie O'Brien and Mr Barry Duroux who were an integral part of our team, supporting Carers of Aboriginal children and young people across NSW, and will be sadly missed, not only by AbSec but by the Carers that they have supported over the years.

Training and Support continued

Recruitment of Carers - Kids in Care Cup 2013

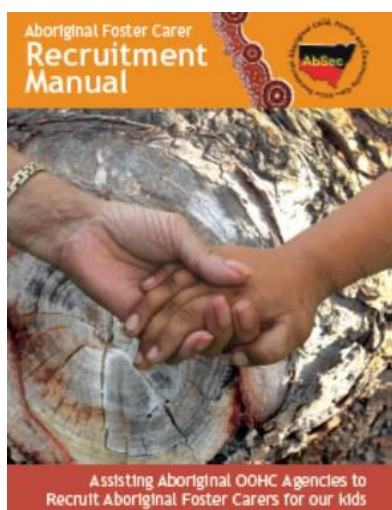
AbSec sponsored the Kids in Care Cup which is an initiative of the Illawarra Titans RLFC. The Kids in Care Cup is a Koori Knockout and a genuine warm up event to Octobers NSW Aboriginal Rugby League Knockout.

The aim of the event is to raise awareness in the community of the transition and the need to recruit more Aboriginal Carers to care for Aboriginal children and young people in out-of-home care.

The “Kids in Care” Cup 2013 was held in September 2013 during Foster Care week. The event was a 16 Men’s Team Knockout competition along with a Women’s demonstration game and an Under 10’s Reconciliation Cup between an Illawarra Aboriginal All Stars Team and the Illawarra Coal League All Stars.



Training and Support continued



Aboriginal Foster Carer Recruitment Manual

This manual was developed as a guide to assist Aboriginal out-of-home care agencies in the recruitment of Aboriginal foster carers.

Throughout the manual there are ideas and steps to help in the recruitment of foster carers for Aboriginal children in out-of-home care in NSW.

It is now apparent that the recruitment and retention of foster carers requires not only specialist skills and knowledge, but also creativity, flexibility, intuition, empathy, passion, and the engagement of current foster carers in the process.

This guide aims to provide a framework for recruitment efforts, practice wisdom, food for thought, and practical tools for staff whose work involves the recruitment of foster

carers. When it works best, foster care recruitment is a whole-of-agency activity that is likely to include chief executive officers, media and communications staff, managers, team leaders, case workers and volunteer foster carers.

The changing nature of technology and the advancement of social media as a means of communication, means Aboriginal out-of-home care agencies need to be innovative and flexible in their approach to recruitment in the 21st century.

Everyone will gain something different from this manual. Promoting foster care is unlike promotions or marketing of any other kind. Foster care will change the lives of the people you recruit, perhaps forever, and for many it will be a big commitment for years of their life.



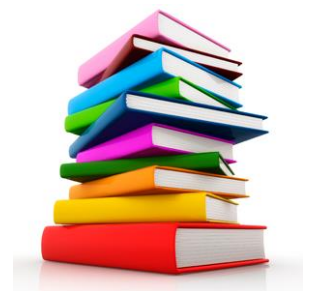
Aboriginal Jobs Together (AJT)



The Aboriginal Jobs Together (AJT) Program is a joint venture between AbSec, Department of Education and Communities (Aboriginal Affairs) and Department of Prime Minister and Cabinet (formerly Department of Education, Employment and Workplace Relations). The AJT program is part of the indigenous Employment Program which has the objective of increasing the employment of Aboriginal people.

The program saw trainees and cadets undertake study and on the job training. Unfortunately not all contracts were successfully filled and therefore there are currently only nine trainees who have completed their training and are still currently employed out of the seventeen contracts.

The AJT program is a great initiative for young people seeking to enter the Community Services sector. Unfortunately AbSec currently does not have another round of traineeships at the moment as the federal government has changed the way in which programs are funding through the Indigenous Advancement Strategy, we are hopeful that traineeships for the future will become available.





The Stolen Generations Council NSW/ACT is auspiced by AbSec,

There are currently 173 registered Stolen Generations Council members in 2013/14; sadly we acknowledge the passing of 7 members. The membership is comprised of survivors of the Cootamundra Aboriginal Girls Training Home, the Kincella Boy's, Bomaderry Infants Home and Parramatta Girls Home and their descendants.

There are various other classes of membership availability to other survivors of other institutions as well as organisations that support the aims of the organisation.

The council operates a telephone assistance service for members of the Stolen Generations. During 2013/14 the service fielded over 1,000 calls from members of the Stolen Generation, their descendants and various organisations.

It has been a busy year for our Stolen Generations members with a range of events and forums.

NAIDOC 2013

AbSec hosted a NAIDOC morning in July 2013 for The Stolen Generations members and carers to attend. The theme was 'Digital TV Get Ready' change over. The ladies really enjoyed themselves just sitting around yarnning and having a good laugh.

December 2013 Cultural Workshops - Queanbeyan

Funded by the Healing Foundation, the Stolen Generations Council (NSW/ACT) Inc., held a 3 day workshop on the 8th - 12th December in Queanbeyan. The Stolen Generation members at the end of the workshop said that it was a very rewarding and significant experience.

The Workshops in Queanbeyan was the first for all Stolen Generations members of the Council who come from many of the NSW Homes that the Council represents and the sense of coming together as a Aboriginal family was most evident with the understanding that past racist policies of governments divided families and separated brothers and sisters and prevented family reunion in a deliberate attempt to undermine the family structure within Aboriginal society.



For this latest cultural workshop our Chairperson, Matilda House, organised for the Mayor of Queanbeyan to attend the opening ceremony in a local park. The Mayor welcomed all of the members to Queanbeyan, indicating that he was very honoured to have them all together in his community.

A Welcome to Country was provided by Michael Williams, a Ngambri and Ngunnawal man, followed by a smoking ceremony facilitated by Barry Williams and Colin Ingram who invited everyone to experience the cleansing.



After the ceremony there was time for everyone to talk to each other and reflect on the past and support each other - It was very emotional and meaningful time for Stolen Generation members.

Day one - Participants were made a Possum Skin Rug which they would cut and sew together using traditional ways and also to make footprints to be placed on the inside of the rug. It advised that "It was great to feel that we were actually doing what our Aboriginal ancestors did all those years ago."



The group broke into smaller units which were facilitated by the trained counsellors who attended for the three-day workshop who encouraged members to personally meet with counsellors privately.

One special part of the Aboriginal history program was the opportunity to read through old 'Dawn Magazines' and everyone enjoyed looking at old photos of themselves, family members and many friends from the Homes, regrettably, many having passed away.

Day two – Members continued working on the Possum Skin Rug and some of the members were involved in Aboriginal art work and storytelling. Naturally, this became an emotional moment which required counsellors to support members through the emotional experience.

Day three – Members finished the Possum Skin Rug and by combining their individual footprints into a pattern it showed where they had come from for the workshop tracing their path by the different rivers they would have once travelled to attend the meeting. It was very cultural and very moving.

There were occasions when the group could sit around and share their thoughts.

Stolen Generations Council NSW/ACT Inc continued

A lot of great things that came out of the cultural workshop with participants indicating “it was a most meaningful and moving time that created greater togetherness and it was evident that the whole workshop was permeated by a lovely spirit of cooperation and a deep sense of the significance of acceptance within the Aboriginal community.”

One special part of the Aboriginal history program was the opportunity to read through old ‘Dawn Magazines’ and everyone enjoyed looking at old photos of themselves, family members and many friends from the Homes, regrettably, many having passed away.

Day two – Members continued working on the Possum Skin Rug and some of the members were involved in Aboriginal art work and storytelling. Naturally, this became an emotional moment which required counsellors to support members through the emotional experience.



Day three – Members finished the Possum Skin Rug and by combining their individual footprints into a pattern it showed where they had come from for the workshop tracing their path by the different rivers they would have

once travelled to attend the meeting. It was very cultural and very moving.



There were occasions when the group could sit around and share their thoughts.

A lot of great things that came out of the cultural workshop with participants indicating “it was a most meaningful and moving time that created greater togetherness and it was evident that the whole workshop was permeated by a lovely spirit of cooperation and a deep sense of the significance of acceptance within the Aboriginal community.”



A Christmas party for members was held on the first night of the workshop which was enjoyed by those who attended. On their last night a Special Christmas dinner for members and their invited guests was held at the Motel main dining room with each of those attending was presented a small but significant Christmas gift. It was really a good family Christmas party. Members all had a deadly time

A General Meeting and the AGM was held on 13 December 2013, the Council held a Board Meeting which included the recommendation to the Council to accept new members. The 2013 AGM followed the Board Meeting and accepted the recommended members. A new Board was elected at the meeting which will direct and guide the Council for the next two years.

The Composition of the new Board:

Matilda House, Chairperson
Michelle Hamilton, Vice
Chairperson
Nancy Hill Wood, Secretary
Karen Hamilton, Treasurer
Jennifer Hottes
Elaine Randell Hughes
Mary Perry
June Franks
Louise Brown
Leilla Wenberg/Penrith
Mary Coombes
Marie Mitchell

The new directors on the Board are mostly from Cootamundra and also from Bomaderry, Parramatta and other Homes, or direct descendants of Stolen Generations members who were taken away from family and Community under provisions of assimilationist legislation and placed in designated Homes.

Utopia

Stolen Generation members were invited to a private screening of the film, Utopia in March 2014. Utopia is an epic production by Emmy and Bafta winning film-maker and journalist John Pilger. Utopia is said to be a person's journey and universal story of power and resistance.

The screening hosted by Paddy Gibson was held at AbSec and attended by ten Stolen Generation members (one a descendant) who enjoyed the screening of the film. Participants also received a copy of the film on DVD/USB to take home.

Caves Beach healing forum

AbSec held a Healing Foundation funded workshop for selected Stolen Generations members at Caves Beach on the Central Coast in May 2014. The workshop was held to get the Girls together and also have a healing process with Lorraine Peeters, who runs to Marumali Circle of Healing Program.

The Girls really enjoyed themselves, just being around each other and yarnning and talking about when they were growing up together.

There were activities for the Girls and opportunities for them to also talk about their feelings and what they could do to make things better for each other.

AbSec also invited two commissioners, Helen Milroy and Jennifer Coate, from the Royal Commission into Institutional Responses to Child Sexual Abuse to attend the workshop to give information to the Girls about the Commission and how they can talk to someone if they want to make a submission.

Royal Commission into Institutional Responses to Child Sexual Abuse Public Enquiry into the Parramatta, Ormond and Hay Institutions.

A number of Council members, including the Chairperson Matilda House who was sent to the Parramatta Home as a child, were in attendance at the February 2014 Hearing for those in these Homes.

Three Aboriginal women were amongst those giving evidence of the harrowing soul destroying circumstances in these Homes. All in attendance were visibly moved at the extent of the cruelty, abuse, and depraved bestiality that prevailed at that time.

Those members of the Stolen Generations in attendance had experienced

similar experiences at other Homes recalling the sad lot for so many of the Stolen Generation members.

ALL ONE – THE GIRLS DVD Documentary and Cootamundra Commemoration DVD

Gaia Films undertook a roadshow screening the *“Centenary Commemoration of the Cootamundra Aboriginal Girls Training Home”* from May- June 2014 across the state.

Gaia Films were on the road for 15 days and undertook 10 screenings of the documentaries. Screenings were held in Coffs Harbour, Kempsey, East Gosford, Sydney, Cootamundra, Junee Correctional Centre, Wagga Wagga, Aboriginal Health Service Wagga, Bathurst, and Dubbo.

The feedback received from those who attended the screening was emotional and heartfelt which prompted those who attended the screening to share their stories.

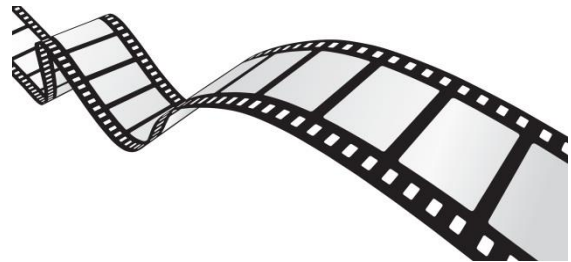
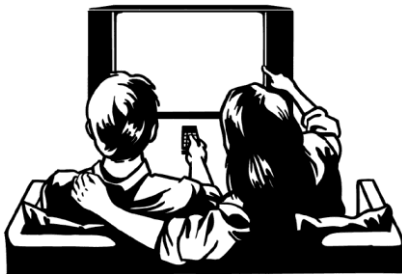
It was great to hear the engagement of some local councils and their enthusiasm for the film, more so when schools are interested in wanting copies of the film to share with their students.

The **All One- the Girls** is a collective story of what happened to some of the Aboriginal girls and babies who were removed from their families and placed into the Cootamundra Aboriginal Girls' Training Home.



Edited from the personal stories of many women, it is a documentary that was shown at the Centenary of the Home in August 2012. *The Coota women said: "we want our story told and the truth to come out."*

The Cootamundra Aboriginal Girls' Training Home Centenary Commemoration 1912-2012 DVD is documentary that covers the special weekend of the Centenary of the Cootamundra Aboriginal Girls' Training Home in August 2012. Many women who had been taken to the Home came back for this moving occasion.



Disability Capacity Building Program

AbSec has been funded \$1.5M by Ageing, Disability and Home Care (ADHC) to build capacity by increasing the number Aboriginal Community Controlled Organisations (ACCO) across NSW to provide specialist disability services to the community.

The focus is on 3-5 newly developed ACCOs as there are currently on two ACCOs within NSW funded to offer specialist disability services to the Aboriginal community.

AbSec will use our relationships and networks to increase the number of accredited Aboriginal organisations that will specialise in disability services which will provide Aboriginal people with disability greater choice and control over the services and supports they access.

AbSec will work in selected sites in NSW to meet the NSW Disability Service Standards and the Quality Framework, we will utilise the ADHC Standards in Action and support agencies through the process to be listed on the ADHC Supplier Directory.

Additionally, AbSec will ensure the ACCO is NDIS ready by working through the “*NDIS Organisational Readiness Toolkit*” developed by NDS.

Agencies have to be accredited by 30 June 2015



AbSec has scoped the selected sites and met with community members/groups and interested stakeholders regarding the project and discussed their commitment to undertake the accreditation process.

The **ADHC Standards in action** which is a practical guide for service providers in implementing the NSW Standards and to support the transition to a person centred service system.

There are six (6) NSW Standards which are in line with the revised National Standards.

The streamlined standards are:

1. Rights
2. Participation and inclusion
3. Individual outcomes
4. Feedback and complaints
5. Service access
6. Service management.

Disability Capacity Program continued

Each NSW standard includes a small number of practice requirements, tips and practice examples to assist service providers in understanding and implementing the DSA and delivering quality services.

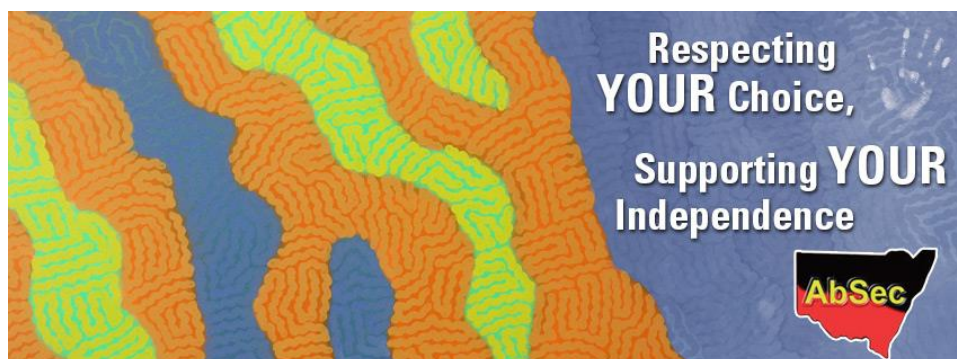
NDIS Readiness – focuses on 7 key areas: -

- Strategy
- Corporate governance
- Clients and market focus
- Financial sustainability
- People and capability
- Information and knowledge management, and;
- Quality management and improvement

ADHC Supplier Directory - AbSec will support the ACCO to be able to be listed with the ADHC Supplier Directory which is a set of guidelines on the engagement and selection of providers to deliver services to people with disability.

The Supplier Directory is a two stage process to attain listing

- Stage One – Organisation
- Stage Two – Service type and location



AbSec Workers Conference 2013

On 6-7 November 2013, AbSec held its “*Strong Sector Connected Kids*” Workers Conference at Opal Cove Resort, Coffs Harbour. The conference brought together the AbSec board and staff, Out-of-home care workers from member and partner agencies.



Above: Auntie Sue Hoskins

The conference provided an opportunity for participants to learn, information share and network and included a range of work-shops which were informative and interactive.

AbSec had the honour of Mr Steve Kinmond, Deputy Ombudsman as keynote speaker who spoke on “Responding to Child Sexual Assault in Aboriginal Communities – Findings from the Ombudsman’s audit.”



Ms Dana Clarke, Chairperson noted “The conference for new staff was a great opportunity to meet everyone and learn, share and understand that we don’t have to reinvent the wheel. For the older staff it was a great networking opportunity and I think a wonderful way to let off some steam after a really busy year.”



Ms Angela Webb, Chief Executive, AbSec confirmed the workshops went a long way to supporting front-line workers and member agencies in ensuring the wellbeing, safety and cultural identity of our Aboriginal children and young people.



AbSec Conference 2014

AbSec held its Strong Sector, Connected Kids Conference at Opal Cove Resort on 19 and 20 March 2014.

The conference provided an opportunity for workers across the sector and carers to discuss issues facing children and young people in out-of-home care. On Wednesday abstracts were showcased prior to conference participants hearing from keynote speaker, Dr Daryl Higgins, Deputy Director (Research), Australian Institute of Family Studies on Child Safe Organisations.

The panel discussion on the Royal Commission into Institutional Responses to Child Sexual Abuse raised some key issues about engagement, standards and lessons learnt. AbSec were pleased to have Mr Jim Longley, Chief Executive, ADHC to talk about the changing disability sector.



The conference dinner was a hit!!! Mr Brian Dowd, the People Mechanic inspired guests who then attended the workshop on day 2 of the conference followed by Terra Firma who played some hit songs.... It was great to see everyone get up and dance and enjoy the evening...



Above: Brian Dowd, The People's Mechanic



Above: Terra Firma

AbSec Conference 2014 continued

Thursday (day 2) was back to business. The day was opened by a performance from the boys at Orara High School followed by the children at Kulai Preschool. Ms Angela Webb, CEO AbSec said “It was great to see the children perform as this is what it’s about, children and culture.”



Thursdays’ program was busy with workshops, discussion on Aboriginal Culture and its Importance and closing the conference with Liz Summers from SAL Consulting – responding to Trauma which really had the audience thinking.



Overall feedback from the conference was positive, everyone enjoyed the program and used the opportunity to network.

Ms Dana Clarke, CEO Burrun Dalai and Chairperson, AbSec confirm “the conference was a wonderful two days, with both Aboriginal and non-Aboriginal Foster Carers having the opportunity to share experiences, learn together and network. A big well done to AbSec for all their hard work.”

The conference provided an opportunity for ACWA and AbSec board members to meet, network and discuss important issues impacting children and young people in the out-of-home care sector.

*AbSec would like to thank the following sponsors **Office of the Children’s Guardian, Life without Barriers and Department of Family and Community Services (Community Services)** and exhibitors **Barnardos Australia and SNAICC (Secretariat of National Aboriginal and Islander Child Care)***



Above: AbSec and ACWA board members

Contact Us

The Aboriginal Child, Family and Community Care State Secretariat (AbSec) can be contacted on

A: 21 Carrington Road Marrickville NSW 2204

P: PO Box 604 Marrickville NSW 1475

Ph: (02) 9559 5299

Fax: (02) 9559 1669

W: www.absec.org.au



The **Aboriginal State-wide Foster Care Support Service** on 1800 888 698

Stolen Generations Council NSW/ACT

P: 1800 263 881

W: www.stolengens.org.au



AbSec Audited Financial Statements For the year ending 30 June 2014



**Aboriginal Child Family and
Community Care State Secretariat
(NSW) Inc.**

ABN 22 477 168 898

Financial Statements
For the year ended 30 June 2014

R A Carroll - Accountant

Shop 3 101 Great Western Highway
Emu Plains NSW 2750

Phone: 02 4735 7122 Fax: 02 4735 7166

Aboriginal Child Family and Community Care State Secretariat (NSW) Inc.
ABN 22 477 168 898

Contents

Committee's Report

Income and Expenditure Statement

Assets and Liabilities Statement

Statement of Cash Flows

Notes to Financial Statements

Statement by Members of the Committee

Independent Auditor's Report

Aboriginal Child Family and Community Care State Secretariat (NSW) Inc.
ABN 22 477 168 898
Committee's Report

Your Committee members submit the financial report of Aboriginal Child, Family and Community Care State Secretariat (NSW) Inc. ("the Association") for the financial year ended 30 June 2014.

COMMITTEE MEMBERS

The committee members at any time during the financial year and up to the date of this report comprised representatives of member agencies. The name of those member agency representatives were:

Dana Clarke (Chairperson)	Lenore Marlowe
Garry Matthews (Treasurer)	Ernest Lovelock
Vacancy (Secretary)	Craig Ardler
Amanda Bridge (Resigned October 2013)	Barbara Kelly
Wayne Carroll (Resigned September 2013)	David Kelly (appointed October 2013)
Tina McGhie	

PRINCIPAL ACTIVITIES

The principal activities of the Association during the financial year were to provide support and advocacy services to member foster care agencies throughout NSW.

SIGNIFICANT CHANGES

No significant change in the nature of these activities occurred during the year.

OPERATING RESULT

The surplus from ordinary activities for the financial year amounted to \$1,177,814 (surplus 2013 year \$15,323).

Signed in accordance with a resolution of the Members of the Committee.

Dana Clarke Chair

Name:

Position:

D Clarke

Garry Matthews - Treasurer

Name:

Position:

G Matthews

Dated:

23 day of October

2014.

Aboriginal Child Family and Community Care State Secretariat (NSW) Inc.

ABN 22 477 168 898

Income and Expenditure Statement

For the year ended 30 June 2014

	2014	2013
	\$	\$
Income		
ADHC 30067-01-001	750,000	0
AJT - Aboriginal jobs together	0	400,000
PACT Statewide002 (FCG)	424,615	35,384
PACT Statewide003	240,000	20,000
Healing 1	700	4,000
DEEWR-AJT Cadets	-16,909	-3,500
DEEWR-AJT Traineeships	0	41,273
Activity 99160021	164,636	0
Dept FaCS-Transition Funding	1,400,000	1,300,000
DOCS-ABSEC Core Funding	473,413	456,936
DOCS-Aboriginal Foster Care Support Serv	187,027	182,245
DOCS-Aboriginal Services Training/Devel	140,767	137,168
DOCS-Accreditation Project	0	30,971
OATSIH CootaBTH-Councillors	110,802	108,950
DOCS Keep Them Safe IFBSS 004	0	70,812
DOCS-Keep Them Safe PACT 003 (Ongoing)	0	252,591
DOCS-Keep Them Safe 005 PEER	650,374	665,148
Coota Girls Centenary Event	0	30,000
Coota Variation 2 - Film 2	0	79,000
Coota Variation 4 - BasketWeave	80,000	0
DOCS-Capacity (SDPKTS001)	0	167,250
Conference Registrations	33,427	0
Conference Sponsorships	42,273	0
Conference Exhibition	4,000	0
Conference Dinner	9,400	0
Membership fees	10,640	8,005
Marumali workshop (Heal 2)	62,200	35,800
Interest received	106,455	179,958
Other income	3,640	5,874
Workers compensation received	0	8,001
PPL Centrelink	4,980	6,065
Profit on disposal of assets	13,189	2,148
Total income	<u>4,895,629</u>	<u>4,224,079</u>

Aboriginal Child Family and Community Care State Secretariat (NSW) Inc.**ABN 22 477 168 898****Income and Expenditure Statement****For the year ended 30 June 2014**

	2014	2013
	\$	\$
Expenses		
Accountancy	7,490	9,967
Agency support fees	59,952	178,086
Audit fees	10,000	8,764
Bank fees and charges	1,143	1,148
Board travel and related costs	18,709	26,304
Carer support	13,243	18,423
Community support	1,389	2,527
Cleaning and recycling costs	14,380	12,171
Conference expenses	59,995	4,561
Consultants fees	76,425	126,016
Depreciation - plant/equipment/vehicles	102,472	109,450
Depreciation - buildings	25,060	18,628
Donation - Sponsorship Golf Day	0	5,000
Donations - Other	1,073	600
Dues and subscriptions	16,966	7,556
Electricity	13,644	9,887
Entertainment - EO discretion	161	2,304
Fees & charges	614	13,949
Fines	203	100
Freight	0	60
Fringe benefits tax	31,822	20,559
Healing forum	14,229	21,566
Insurance	20,805	25,336
Insurance - workers compensation	4,815	19,287
Interest expense	4	42,840
IT related costs	63,930	63,074
Legal fees	15,105	0
Marketing	32,723	44,572
Meeting costs	41,025	19,244
Minor assets written off	14,060	11,866
Motor vehicle expenses	104,680	98,346
Office equipment	0	7,027
Office equipment maintenance	917	524
Office maintenance	3,238	4,583
Postage and shipping	4,020	2,400
Printing and stationery	33,430	30,796
Provision for Annual/RDO/In lieu leave	44,859	8,625
Rates & land taxes	4,711	4,538
Rent	14,601	16,304
Salaries - Taxable	1,724,486	1,720,441
Other employment costs	4,424	4,709
Salary sacrifice - FBT	292,036	278,841
Salary sacrifice- meal entertainment	44,762	40,955
Salary sacrifice - ETP for expenses	5,628	0
Sponsorship	58,140	20,567
Staff amenities	5,976	4,926

The accompanying notes form part of these financial statements.

Aboriginal Child Family and Community Care State Secretariat (NSW) Inc.

ABN 22 477 168 898

Income and Expenditure Statement

For the year ended 30 June 2014

	2014	2013
	\$	\$
Staff training	18,925	28,363
Superannuation	200,884	186,747
Taxis - personal (FBT Liable)	683	1,153
Telephone	39,000	39,434
Trainee / cadet support	73,051	189,272
Training forums	120,451	218,423
Training materials	6,140	174,729
Travel and conferences	247,336	282,758
Travel subsidies for trainees	4,000	20,450
Total expenses	3,717,815	4,208,756
Net Profit from Ordinary Activities before income tax	1,177,814	15,323

Aboriginal Child Family and Community Care State Secretariat (NSW) Inc.

ABN 22 477 168 898

Assets and Liabilities Statement

As at 30 June 2014

	Notes	2014	2013
		\$	\$
Current Assets			
Cash assets	2	6,073,580	3,853,302
Receivables	3	19,342	8,012
Total Current Assets		<u>6,092,922</u>	<u>3,861,314</u>
Non-Current Assets			
Property, plant and equipment	4	1,393,852	1,463,293
Total Non-Current Assets		<u>1,393,852</u>	<u>1,463,293</u>
Total Assets		<u>7,486,774</u>	<u>5,324,607</u>
Current Liabilities			
Payables	5	72,551	117,032
Current tax liabilities	7	312,171	59,241
Provisions	8	162,493	118,881
Other	9	3,275,000	2,542,713
Total Current Liabilities		<u>3,822,215</u>	<u>2,837,867</u>
Non-Current Liabilities			
Financial liabilities	6	60	55
Total Non-Current Liabilities		<u>60</u>	<u>55</u>
Total Liabilities		<u>3,822,275</u>	<u>2,837,922</u>
Net Assets		<u>3,664,499</u>	<u>2,486,685</u>
Member's Equity			
Opening balance		2,486,685	2,471,362
Current year profit		1,177,814	15,323
Member's Equity		<u>3,664,499</u>	<u>2,486,685</u>

The accompanying notes form part of these financial statements.

Aboriginal Child Family and Community Care State Secretariat (NSW) Inc.
ABN 22 477 168 898
Statement of Cash Flows
For the year ended 30 June 2014

	2014	2013
	\$	\$
Cash flows from operating activities		
Surplus as per Income Statement	1,177,814	15,323
Adjustments for:		
Decrease in grants in advance	0	-811,650
Increase in grants in advance	732,287	0
Depreciation	127,532	128,077
Increase in employee provisions	43,611	9,872
Interest income	-106,455	-179,957
Interest expense	4	42,839
Profit on sale of fixed assets	-13,139	-2,148
Loss on sale of fixed assets	0	0
Increase in trade and other receivables	-11,330	19,137
Decrease in trade and other payables	-44,479	13,803
Cash generated from operations	<u>1,905,845</u>	<u>-764,704</u>
Decrease in taxation liabilities	0	-477,362
Increase in taxation liabilities	252,929	0
Net cash from operating activities	<u>2,158,774</u>	<u>-1,242,066</u>
Cash flows from investing activities		
Purchase of property, plant and equipment	-98,917	-372,173
Proceeds from sale of equipment	53,966	8,506
Interest received	106,455	137,118
Net cash used in investing activities	<u>61,504</u>	<u>-226,549</u>
Cash flows from financing activities	0	0
Net decrease in cash	0	-1,468,615
Net increase in cash	2,220,278	0
Cash at beginning of the period	<u>3,853,302</u>	<u>5,321,917</u>
Cash at end of the period	<u><u>6,073,580</u></u>	<u><u>3,853,302</u></u>

Aboriginal Child Family and Community Care State Secretariat (NSW) Inc.
ABN 22 477 168 898
Statement of Changes In Equity
For the year ended 30 June 2014

	2014	2013
	\$	\$
Opening balance		
Balance carried forward from previous period	2,486,685	2,471,362
Adjustment for errors	0	0
Adjustment for changes in accounting policies	0	0
Adjusted opening balance	<u>2,486,685</u>	<u>2,471,362</u>
Comprehensive income		
Other comprehensive income	0	0
Revaluation Adjustment	0	0
Surplus (Deficit) for the period	<u>1,177,814</u>	<u>15,323</u>
Total comprehensive income	<u>1,177,814</u>	<u>15,323</u>
Contributed equity /capital	0	0
Closing balance attributable to Association	<u><u>3,664,499</u></u>	<u><u>2,486,685</u></u>

Aboriginal Child Family and Community Care State Secretariat (NSW) Inc.

ABN 22 477 168 898

Notes to Financial Statements

For the year ended 30 June 2014

Note 1: Statement of Significant Accounting Policies

This financial report of the Aboriginal Child Family and Community Care State Secretariat (NSW) Inc. ("the Association") is a special purpose financial report prepared in order to satisfy the requirements of the Department of Community Services and other Government Departments. The members of the Committee have determined that the Association is not a reporting entity.

The financial report has been prepared in accordance with the Associations Incorporation Act 2009 and with the requirements of the following Australian Accounting Standards:

AASB 108: Accounting Policies, Changes in Accounting Estimates and Errors

AASB 110: Events after the Balance Sheet Date

AASB 116: Property, Plant and Equipment

AASB 1031: Materiality

AASB 1048: Interpretation of Standards

No other Australian Accounting Standards or other authoritative pronouncements of the Australian Accounting Standards Board have been applied.

The financial report is also prepared on an accruals basis and is based on historic costs and does not take into account changing money values or, except where specifically stated, current valuations of non-current assets.

The following specific accounting policies, which are consistent with the previous period unless otherwise stated, have been adopted in the preparation of this financial report:

(a) Income Tax

The Association is registered as an income tax exempt entity under Section 50 of the Income Tax Assessment Act 1997; accordingly, no provision for income tax is necessary nor is one represented in these accounts.

(b) Property, Plant and Equipment

Land is included at cost, independent of the entity's valuation. Buildings are carried at cost less, where applicable, any accumulated depreciation.

Plant and equipment are carried at cost less, where applicable, any accumulated depreciation.

The depreciable amount of all plant and equipment are depreciated over the useful lives of the assets to the Association commencing from the time the asset is held ready for use.

Leasehold improvements are amortised over the shorter of either the unexpired period of the lease or the estimated useful lives of the improvements.

Aboriginal Child Family and Community Care State Secretariat (NSW) Inc.

ABN 22 477 168 898

Notes to Financial Statements

For the year ended 30 June 2014

(c) Employee Entitlements

Provision for employee benefits in the form of Long Service Leave, Annual Leave, Rostered Days Off and Time in Lieu have been made for the estimated accrued entitlements, including on-costs, of all employees on the basis of their terms of employment.

In the case of Long Service Leave, any accrual has been measured by reference to periods of service and current salary rates as it is considered that this results in an amount not materially different to that achieved by discounting estimated future cash flows.

(d) Subsequent Events

There has not arisen, since the end of the financial year, any matter or circumstance that has, or may, significantly affect the operation of the Association, the results of those operations or the state of affairs of the Association in future financial years that are not otherwise disclosed in this financial report.

(e) Revenue

Revenue from the rendering of a service is recognised upon the delivery of the service to the customer.

Grant revenue is recognised in the Income and Expenditure Statement when the entity obtains control over the funds, which is generally at the time of receipt unless the grant is clearly identified as relating to future periods. In this event, it is shown as "Grants in Advance" and brought to account progressively in the Income and Expenditure Statement over the period of the grant.

Interest revenue is recognised on a proportional basis taking into account the interest rates applicable to the financial assets.

Other revenue is recognised when the right to receive the revenue has been established.

All revenue is stated net of the amount of goods and services tax.

(f) Comparative Figures

Where required by Accounting Standards, comparative figures have been adjusted to conform to changes in presentation for the current financial year.

(g) Goods and Services Tax (GST)

Revenues, expenses and assets are recognised net of the amount of the goods and services tax (GST), except where the amount of GST incurred is not recoverable from the Australian Taxation Office (ATO). In these circumstances the GST is recognised as part of the cost of acquisition of the asset or as part of an item of expense.

Receivables and payables in the Assets and Liabilities Statement are shown inclusive of GST.

The net amount of GST recoverable from, or payable to, the ATO is included as a current asset or liability in the Assets and Liabilities Statement.

Aboriginal Child Family and Community Care State Secretariat (NSW) Inc.

ABN 22 477 168 898

Notes to Financial Statements

For the year ended 30 June 2014

(h) Operating Segment

The Association is incorporated under the Associations Incorporation Act 1984 and operates predominantly in one business and geographical segment being the provision of support and advocacy services to member foster care agencies throughout NSW.

(i) Cash and Cash Equivalents

Cash and cash equivalents include cash on hand, deposits held at-call with banks, other short-term highly liquid investments with original maturities of three months or less, and bank overdrafts. Bank overdrafts are shown within borrowings in current liabilities on the Assets and Liabilities Statement.

(j) Impairment of Assets

At the end of the reporting period, the committee reviews the carrying amounts of its tangible and intangible assets to determine whether there is any indication that these assets have been impaired. If such an indication exists, an impairment test is carried out on the asset by comparing recoverable amount of the asset, being the higher of the asset's fair value less costs to sell and value in use, to the asset's carrying amount. Any excess of the assets carrying amount over its recoverable amount is recognised in the Income and Expenditure statement.

Aboriginal Child Family and Community Care State Secretariat (NSW) Inc.

ABN 22 477 168 898

**Notes to Financial Statements
For the year ended 30 June 2014**

	2014	2013
	\$	\$
Note 2: Cash assets		
Bank accounts:		
Cash at bank - CBA Cheque account	38,644	826,942
Cash at bank - ING On-Call Account	245,400	259,659
Cash at bank - CBA Online Account	3,031,772	2,764,501
Cash at bank - CBA DGR Account	500	500
Commonwealth Bank Term Deposits	2,756,164	0
Other cash items:		
Petty cash	900	900
Petty cash - Southern (Judy)	0	200
Petty cash - Trangie (Deb)	0	200
Petty cash - Northern (Barry D)	0	200
Petty Cash - Paul (FGC)	200	200
	<u>6,073,580</u>	<u>3,853,302</u>

The Association currently maintains a mortgage offset account with the Commonwealth Bank of Australia in respect of its property located at 21 Carrington Rd, Marrickville NSW (refer to Note 5 and Note 7) amounting to \$630,000. As at 30 June 2014, the unused portion of this facility amounts to \$629,940. This facility is at call.

Note 3: Receivables

Current

Trade debtors	18,078	7,524
RTA E-Toll Account	920	488
Other debtor - Cabcharge	344	0
	<u>19,342</u>	<u>8,012</u>

Aboriginal Child Family and Community Care State Secretariat (NSW) Inc.

ABN 22 477 168 898

**Notes to Financial Statements
For the year ended 30 June 2014**

	2014	2013
	\$	\$
Note 4: Property, Plant and Equipment		
Land/Buildings:		
Land-21 Carrington Rd, Marrickville- at cost	350,000	350,000
Building -21 Carrington Rd, Marrickville- at cost	803,948	803,948
- Less: Accumulated depreciation	<u>-58,977</u>	<u>-38,878</u>
	<u>1,094,971</u>	<u>1,115,070</u>
Furniture and Fittings (Marrickville):		
- At cost	132,307	132,307
- Less: Accumulated depreciation	<u>-25,519</u>	<u>-15,941</u>
	<u>106,788</u>	<u>116,366</u>
Computer Equipment:		
- At cost	104,758	88,458
- Less: Accumulated depreciation	<u>-79,315</u>	<u>-66,010</u>
	<u>25,443</u>	<u>22,448</u>
Office Furniture and Fittings:		
- At cost	45,298	45,297
- Less: Accumulated depreciation	<u>-30,725</u>	<u>-26,261</u>
	<u>14,573</u>	<u>19,036</u>
Motor vehicles:		
- At cost	273,653	331,021
- Less: Accumulated depreciation	<u>-121,576</u>	<u>-140,648</u>
	<u>152,077</u>	<u>190,373</u>
	<u>1,393,852</u>	<u>1,463,293</u>

The Association currently maintains a mortgage offset account with the Commonwealth Bank of Australia in respect of its property located at 21 Carrington Rd, Marrickville NSW (refer to Note 2 and Note 7) amounting to \$630,000. As at 30 June 2014, the unused portion of this facility amounts to \$629,940. This facility is at call.

Note 5: Payables

Unsecured:

- Trade Creditors	59,152	90,045
- DEEWR	0	12,950
- Accrued Expenses	12,000	12,000
- Mobile phone employees-to be repaid	84	0
- Master Card - D. Clarke	1,298	1,545
- Master Card - E.O	<u>17</u>	<u>492</u>
	<u>72,551</u>	<u>117,032</u>

Aboriginal Child Family and Community Care State Secretariat (NSW) Inc.

ABN 22 477 168 898

**Notes to Financial Statements
For the year ended 30 June 2014**

	2014	2013
	\$	\$
Note 6: Financial Liabilities		
Non-Current		
Secured:		
- CBA Loan Account 200014002863	<u>60</u>	<u>55</u>
	<u>60</u>	<u>55</u>

The Association currently maintains a mortgage offset account with the Commonwealth Bank of Australia in respect of its property located at 21 Carrington Rd, Marrickville NSW (refer to Note 2 and Note 5) amounting to \$630,000. As at 30 June 2014, the unused portion of this facility amounts to \$629,940. This facility is at call. The offset arrangement resulted in a considerable reduction in the budgeted interest charge that the Association had expected to be incurred on its borrowings required to fund its property purchase. So as to properly reflect the expected charge, interest expense has been grossed up with a reciprocal item shown as interest received so as to accurately record this expected financial position.

Note 7: Tax Liabilities

Current

GST payable	277,709	30,051
PAYG withholding tax payable	<u>34,462</u>	<u>29,190</u>
	<u>312,171</u>	<u>59,241</u>

Note 8: Provisions

Current

Provision for annual leave	116,545	94,024
Provision for rostered day off	8,709	8,842
Provision for time in lieu	12,164	609
Provision for long service leave	25,075	14,159
Provision for paid parental leave	<u>0</u>	<u>1,247</u>
	<u>162,493</u>	<u>118,881</u>

Note 9: Other Liabilities

Current

Grants in Advance:

- Department of FaCS-Ageing , Disability & Homecare	875,000	375,000
- Department of FaCS-CS	<u>2,400,000</u>	<u>2,167,713</u>
	<u>3,275,000</u>	<u>2,542,713</u>

Aboriginal Child Family and Community Care State Secretariat (NSW) Inc.

ABN 22 477 168 898

Notes to Financial Statements

For the year ended 30 June 2014

Note 10: Economic Dependency / Going Concern

The ongoing operation of Aboriginal Child Family and Community Care State Secretariat (NSW) Inc. is financially dependent upon the continued support of funding bodies for recurrent grant income. This financial report has been prepared on a going concern basis, which contemplates continuity of normal operating activities and the realisation of assets and settlement of liabilities in the normal course of the Association's operations.

Note 11: Association Details

The registered office and principal place of business of the Association is:

Aboriginal Child, Family and Community Care State Secretariat (NSW) Inc.
Level 1, 21 Carrington Road
Marrickville NSW 2204

Aboriginal Child Family and Community Care State Secretariat (NSW) Inc.

ABN 22 477 168 898

Statement by Members of the Committee

The Committee has determined that the Aboriginal Child Family and Community Care State Secretariat (NSW) Inc. is not a reporting entity and that this special purpose financial report should be prepared in accordance with the accounting policies outlined in Note 1 to the financial statements.

In the opinion of the Committee:

1. The financial statements and notes present fairly the Association's financial position as at 30 June 2014 and its performance for the year ended on that date in accordance with the accounting policies described in Note 1 to the financial statements;
2. At the date of this statement, there are reasonable grounds to believe that the Association will be able to pay its debts as and when they become due and payable.

This statement is made with a resolution of the Committee and is signed for and on behalf of the Committee by:



Name: Dana Clarke
Position: Chairperson



Name: GARRY MATTHEWS
Position: TREASURER

Dated: 23RD day of OCTOBER 2014



**Independent Auditor's Report to the Members of the
Aboriginal Child, Family and Community Care State Secretariat
(NSW) Inc.**

We have audited the accompanying financial report, being a special purpose financial report, of the Aboriginal Child, Family and Community Care State Secretariat (NSW) Inc. ("the Association"), which comprises the committee's report, the assets and liabilities statement as at 30 June 2014, the income and expenditure statement for the year then ended, notes comprising a summary of significant accounting policies and other explanatory information and the statement by members of the committee.

Committee's Responsibility for the Financial Report

The committee of the Aboriginal Child, Family and Community Care State Secretariat (NSW) Inc. is responsible for the preparation and fair presentation of the financial report, and has determined that the basis of preparation described in Note 1 is appropriate to meet the requirements of the *Associations Incorporation Act 2009* and is appropriate to meet the needs of the members. The committee's responsibility also include such internal control as the committee determines is necessary to enable the preparation and fair presentation of a financial report that is free from material misstatement, whether due to fraud or error.

Auditor's Responsibility

Our responsibility is to express an opinion on the financial report based on our audit. We have conducted our audit in accordance with Australian Auditing Standards. Those standards require that we comply with relevant ethical requirements relating to audit engagements and plan and perform the audit to obtain reasonable assurance whether the financial report is free from material misstatement.

An audit involves performing procedures to obtain audit evidence about the amounts and disclosures in the financial report. The procedures selected depend on the auditor's judgment, including the assessment of the risks of material misstatement of the financial report, whether due to fraud or error. In making those risk assessments, the auditor considers internal control relevant to the association's preparation and fair presentation of the financial report, in order to design audit procedures that are appropriate in the circumstances, but not for the purpose of expressing an opinion on the effectiveness of the association's internal control.



An audit also includes evaluating the appropriateness of accounting policies used and the reasonableness of accounting estimates made by the committee, as well as evaluating the overall presentation of the financial report.

We believe that the audit evidence we have obtained is sufficient and appropriate to provide a basis for our audit opinion.

Opinion

In our opinion, the financial report presents fairly, in all material respects, the financial position of the Aboriginal Child, Family and Community Care State Secretariat (NSW) Inc. as at 30 June 2014 and its financial performance for the year then ended in accordance with the accounting policies described in Note 1 to the financial statements, and the requirements of the *Associations Incorporation Act 2009*.

Basis of Accounting and Restriction on Distribution

Without modifying our opinion, we draw attention to Note 1 to the financial report, which describes the basis of accounting. The financial report has been prepared to assist the Aboriginal Child, Family and Community Care State Secretariat (NSW) Inc. to meet the requirements of the *Associations Incorporation Act 2009*. As a result, the financial report may not be suitable for another purpose.

A F Wallis & Co.
Chartered Accountants

A F Wallis

Registered Auditor Number: 87922

Dated in Sydney this 23rd day of October 2014