



Aboriginal Child, Family and Community Care State Secretariat (AbSec)

Annual Report 2014/2015





Acknowledgement

The Aboriginal Child, Family and Community Care State Secretariat (AbSec) would like to acknowledge that our work is conducted on the land of the Aboriginal nations of NSW.

AbSec pays their respects to the Elders, both past and present and to those of the future, for they hold the memories, the traditions, the culture and aspirations of the Aboriginal Community.

Contents

Who we are.....	4
Chairpersons Report.....	5
A/Chief Executive Officer Report.....	6
AbSec Board.....	8
AbSec Structure.....	9
Early Intervention.....	10
Out-of-Home-Care	12
Foster Support.....	13
Cultural Support.....	14
Disability Sector Development.....	15
Stolen Generations Council NSW/ACT Inc.....	16
Workforce Development.....	20
Community Engagement.....	21
Recruitment of Carers – Kids in Care Cup.....	23
Achievements	24
Financials.....	26

Who We Are

The Aboriginal Child, Family and Community Care State Secretariat (NSW) (AbSec) is a not for profit organisation. The organisation is recognised as the peak NSW Aboriginal organisation providing child protection and out of home care policy advice and supporting our Aboriginal Community Controlled (ACCO) Sector to deliver for Aboriginal children, families and communities. AbSec is also responsible for building the capacity of the Aboriginal disability non-government sector so that Aboriginal people with disability have choice in the type of services and supports they can access.

AbSec's focus is around implementing initiatives that we believe, as an Aboriginal peak body, are good practice in supporting Aboriginal children, families and communities. AbSec is formed by member ACCOs delivering supports and services in the care and protection system in NSW, as well as carers (Aboriginal and non-Aboriginal) and partner organisations that share our values.

The Aboriginal Disability Sector Development program focuses on building capacity of the Aboriginal disability non-government sector so that people with disability have choice in the type of services and supports they access.

AbSec auspices the Aboriginal Statewide Foster Care Support Service (ASFCSS). This service provides free telephone advice and advocacy for carers of Aboriginal children and young people.

Our Vision

Our vision is that all Aboriginal children and young people are looked after in safe, thriving Aboriginal families and communities and are raised strong in spirit and identity, with every opportunity for lifelong wellbeing and connection to culture surrounded by holistic supports.

Partnerships

AbSec would like to acknowledge our corporate partners and funders and in particular, the NSW Department of Family and Community Services. Our partners have demonstrated a real commitment to Aboriginal people across NSW through the ongoing support they provide us.

We would like to thank the Department of Prime Minister and Cabinet and Mr Richard Weston, Chief Executive Officer, Healing Foundation, for the funding they have made available to the Stolen Generations Council of NSW/ACT.

AbSec continues to work proactively with the NSW Government and acknowledge the support of the Hon. Brad Hazzard MP, Minister for Family and Community Services, the Hon. Leslie Williams MP, Minister for Early Childhood and Minister for Aboriginal Affairs and the Hon. John Ajaka MLC, Minister for Ageing, Minister for Disability Services and Minister for Multicultural Affairs, in expanding support of NSW Aboriginal Communities through AbSec.

Chairpersons Report

Another year has come and gone and the number of our Aboriginal children and young people entering OOHC continues to rise.

AbSec and Aboriginal agencies across NSW have learned valuable lessons over the past 12 months. As Aboriginal people we continue to strive to provide for our own, recognising that WE understand our communities & how we best meet the unique needs of these communities.

Angela Webb left AbSec in April; we wish her well and thank her for her work at AbSec. At the Board request, Tim Ireland ably stepped into the role of acting CEO until the position was filled. Tim has done an excellent job, and the board thanks him for his hard work, ability to read the sector and his persistence.

AbSec has been an active participant in the changes to the sector over the past year. We understand the unique opportunities that the Safe Home for Life reform brings to AbSec and our member agencies. This has led to a working relationship with FACS through the co-design process to ensure that over time, we are able to develop holistic, tailored approaches to working with our Aboriginal children, families and communities to ensure better life outcomes. AbSec recognises that this has to be achieved through support from strong Aboriginal community controlled organisations that deliver a raft of services that meet the unique needs of individual communities and families.

The current IFBS, FGC and NDIS programs fit into this unique service provision to meet the special needs of our Aboriginal communities. We can no longer view "out of home care" as the way to protect our children, there will always be a need for out of home care, however, Aboriginal agencies need to utilise those unique skills and services they deliver informally to Aboriginal families and children in a more tailored formal way to achieve what we want for our families and communities, Aboriginal kids, who are strong in identity, enriched by their culture, supported by their community and proud to be Aboriginal.

The staff at AbSec have achieved a huge amount over the past year, in an ever changing environment. We still however have a long way to go to achieve what we ultimately want, our communities, serviced by local people, through strong and capable Aboriginal agencies that are driven by Aboriginal families' unique needs, ensuring always that culture, and identity are embedded in everything we do.

As an Aboriginal sector we recognise that we are able to do this, it's our role now to make sure, government and those of influence understand this. No more talking about the problem, let's address it the best way we know how!

Dana Clarke
Chairperson

A/Chief Executive Officer Report

The Aboriginal Child, Family and Community Care State Secretariat (AbSec) remains focused on supporting Aboriginal children, young people, families, carers and communities. The 2014/15 financial year has provided many opportunities and challenges for AbSec to continue to perform its peak function, while setting a new direction to better support the Aboriginal sector into the future.

On 29 October 2014 the *Child Protection Amendment Act 2014* (Amendment Act) was proclaimed which resulted in changes to the *Children and Young Persons (Care and Protection) Act 1998* (Care Act) under the 'Safe Home for Life' reforms. AbSec has been focused on working through these reforms and exploring what this would mean in practice for Aboriginal children, young people and communities across NSW. The reforms introduce thinking around legal permanence that from an Aboriginal community perspective create a need to thoroughly think through whether these reforms are in the best interests of Aboriginal children, young people and families across the state.

Over the past 12 months, AbSec has been busy in providing policy advice to government, supporting the Aboriginal sector through practice and accreditation support, working to build an Aboriginal disability sector, and participating in future direction setting exercises with key stakeholders, such as the NSW Ombudsman, the Office of the Children's Guardian and the Department of Family and Community Services. This is in recognition of the Aboriginal sector achieving much under the early reforms of transitioning children and young people to the non-government sector; however, there is a greater need to do more to over the coming years to cater for the significant numbers of Aboriginal children and young people in care, and work towards reducing and preventing this over time.

AbSec has been able to work through and support the transition of Aboriginal children in OOH to Aboriginal community controlled agencies, where possible, keeping in line with the government's commitment to ensure Aboriginal children and young people are supported by Aboriginal community controlled agencies. This commitment is embedded within more than 10 months' work in the past 12 months towards co-designing the future Aboriginal sector to deliver better outcomes for Aboriginal children, young people and families that are vulnerable or at risk.

AbSec has continued to develop with FACS, the NSW Children's Court, and the Aboriginal Legal Service, the need for cultural care planning that is meaningful and informs effective quality cultural support plans following placement of an Aboriginal child. The aim for cultural care and cultural support planning is to ensure every Aboriginal child has access to their culture, and the opportunity to form who they are as proud Aboriginal children, and future Aboriginal leaders in the community.

Importantly, as an Aboriginal sector, AbSec has worked to build on all the achievements to date and strive for a future Aboriginal sector that is providing a strong Aboriginal community controlled safety-net to meet the needs of Aboriginal children, young people, families and communities. With this safety-net designed to be one that delivers holistic and individually tailored Aboriginal child and family services across NSW in order to provide better outcomes.

Additionally, as an organisation, AbSec has commenced refreshing its focus towards the future with strategic planning consultations undertaken with key stakeholders, including AbSec's membership.

In the latter half of the 12 month period covered in this report, AbSec has attempted to re-engage with the membership to profile significant issues and ideas regarding the current state. Over the years to come, this will continue to ensure the organisation's foundations are strong and AbSec is representing the collective interests of its constituents.

I want to thank the AbSec Board for their support and leadership during this time and to the AbSec staff who are dedicated and committed to supporting Aboriginal children, young people, families and communities.

Tim Ireland
A/Chief Executive Officer



AbSec Board

On 23 October 2014, AbSec held its Annual General Meeting in which board members were voted.

The appointments to the AbSec board are:



Ms Dana Clarke, Chairperson



Ms Kathy McKenzie, Vice-Chair



Mr Garry Matthews, Treasurer



Ms Tina McGhie, Secretary



Mr Denis Jackson, Board Member

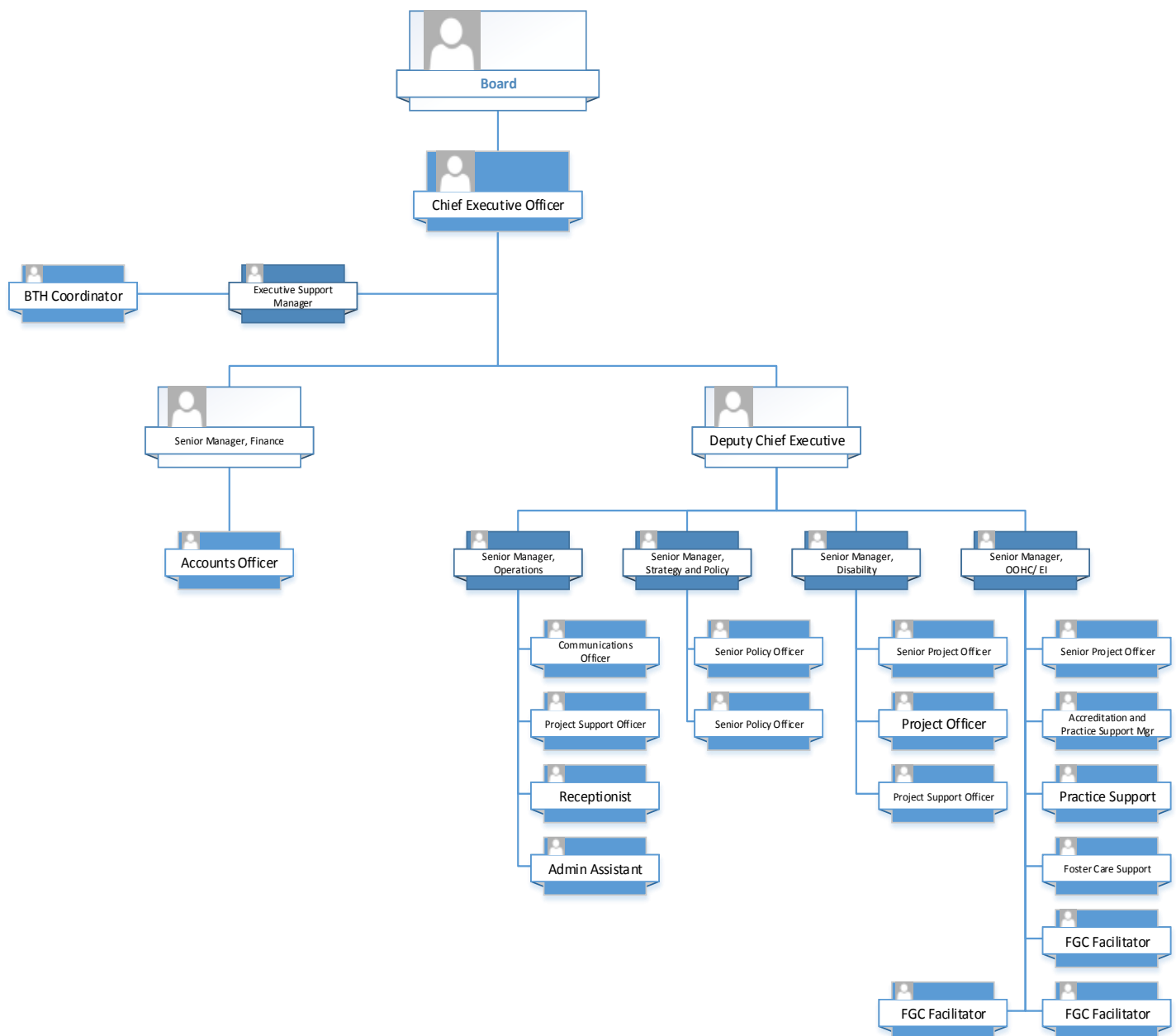


Ms Petrice Manton, Board Member

- Mr Ernest Lovelock, Board Member
- Ms Cecily Lyons, Board Member*

* Notes: Board Member has since resigned from their position

AbSec Structure



Early Intervention

AbSec pilots and supports a number of early intervention programs in Aboriginal communities, which are aimed delivering for Aboriginal children, young people and families earlier.

The **Aboriginal Intensive Family Based Services (IFBS)** model was piloted following recommendations made by Justice James Wood in the 2008 Special Commission of Inquiry into Child Protection in NSW, and the NSW Government's commitment to implement ***Keep Them Safe (KTS): A Shared Approach to Child Wellbeing***.

Under KTS, the IFBS program was developed as the highest level of intervention within a continuum of early intervention and placement prevention services designed to work with children and their families to improve family function and to reduce entries into out of home care.

IFBS offers an intensive level of casework and a broad spectrum of support services to families in crisis, for a period of up to 12 months.

The service is targeted at children who are at imminent risk of removal from their families, but where an assessment is made that there is a reasonable prospect of improvement within the family when the right support is offered. Families can only be referred by the Department of Family and Community Services (FACS), or through court order.

AbSec believes the service represents a vital part to the approach to safeguarding the wellbeing of children, by allowing eligible families every opportunity to address their needs before placement of their child in out of home care becomes necessary.

The model also includes a step-down service, providing less intensive case management support for up to six months following the intensive crisis service.

Currently there are four IFBS services established in high-need areas across NSW and delivered by the non-government sector. AbSec works to support these services to ensure quality and practice is maintained to high standards.

The **Protecting Aboriginal Children Together (PACT)** pilot is to ensure there is an Aboriginal perspective when it comes to making key decisions about the care and protection of Aboriginal children and young people.

PACT does this by having Aboriginal cultural advisers work alongside FACS caseworkers. This gives caseworkers a deeper understanding of Aboriginal culture. It also helps open the way for Aboriginal families to take a role in decisions that affect them and their children.

The model has been piloted in two sites—Shellharbour and Moree—since 2011. This service is in addition to existing FACS models of internal and external consultation aimed at meeting the requirements for self-determination within the Children and Young Persons (Care and Protection) Act 1998.

PACT is aimed toward Aboriginal children and young people who are the subject of a risk of significant harm (ROSH) report that is allocated to a participating FACS site for further assessment or intervention. For the period of the pilot, all reported children and young people who meet the criteria are to be offered a PACT service:

- Aboriginal or Torres Strait Islander
- allocated to the FaCS child protection team for further action; and
- no other open case plan.

Eligibility is determined during the FACS (CSC) intake process and the outcome recorded as part of local intake procedures.

PACT covers all key decision-making points in a child protection case. Once a case is allocated, PACT is to respond within the relevant timeframe (based on risk level). The first step is a pre-assessment consultation between the FACS and PACT. If the family consents, PACT participates in the first home visit, safety assessment and risk assessment, and, if required, the case plan, risk re-assessment, care plan application, identification of carers, out-of-home care case plan and case closure.

AbSec continues to argue that the PACT pilot needs to be maintained and expanded as a good model for ensuring consultation in these sensitive matters. AbSec works to support effective operation on the model in key locations.

Aboriginal Family Group Conferencing (FGC) is a pilot that is being directly delivered by AbSec. Aboriginal Family Group Conferencing is based on the Dhum Djirri model (Aboriginal Family Decision making model in Victoria) which is modelled broadly from family group conferencing in New Zealand.

Aboriginal FGC provides Aboriginal families, who are currently case managed by the Department of Family and Community Services (FACS), with an opportunity to discuss what needs to be done to achieve improved safety and protection of their children and young people.

The purpose of Aboriginal FGC is to encourage relevant family members and others to meet and work toward an agreed way forward in order to address any risk and or safety concerns as advised by FACS.

Aboriginal FGC is about involving appropriate family members in the development of a 'Family Plan' that is agreed to by the family and FACS. A Conference is organised to assist in the development of this Family Plan.

All Conferences involve an independent facilitator who is employed by AbSec. The facilitator works throughout the entire process, including the Conference itself, and involves working with the family in developing the strategies to be included in the Family Plan.

This program is being piloted in selected sites in Northern, Illawarra Shoalhaven and Central Coast Districts. AbSec has recognised the success of this model in assisting to return Aboriginal children back to families and address ongoing concerns about family capacity.

Following conclusion of the pilot in October 2015, AbSec will be working to establish a continuation of this program as a sector support resource to support Aboriginal children and young people at risk or in vulnerable circumstances, and to continue to build family capacity, by identifying appropriate supports and services in the community, to be stronger in their role of supporting an Aboriginal child or young person.

Out-of-Home Care

The Out-of-Home Care team has provided our member agencies with a range of supports throughout the year to assist with maintaining capacity to deliver quality services and supports for Aboriginal children and young people. The work of the team has focused around practice support, training, cultural appreciation and advice around cultural connection, and support with maintaining compliance against requirements.

Support with Provisional Accreditation and Capacity Building

AbSec successfully supported agencies to achieve provisional accreditation or extend their accreditation. This has been done through supporting the development of policies and procedures and understanding the standards set by the NSW Office of the Children's Guardian.

AbSec continues to focus on ensuring a strong and capable sector that is able to meet the needs of Aboriginal communities across the state. Our capacity building work is directed at emerging organisations wishing to provide Aboriginal child welfare services and supports, acknowledging the need to work with Aboriginal organisations in a strategic way to ensure a sustainable and viable Aboriginal sector.

Governance Top 10 Tips

AbSec has focused on providing a presentation and action planning process for development and reviewing fundamental non-government and community agency governance processes. These have been specifically tailored to address out-of-home care (OOHC) requirements and delivered to senior management and Boards of our member agencies, as required.

NSW Standards for OOHC presentation

A plain English explanation of the OOHC standards pitched for workers, managers and boards to understand their legal responsibilities. A version is also delivered to carers.

Direct Evidence and Casework Support

- **Ongoing support** – after provisional accreditation – agencies continue to receive support to address direct evidence requirements and build their casework capacity.
- **Child and carer files checks** – provide an independent check of record keeping against the OOHC standards
- **Health Scan** - provides a review and analysis of practice
- **Reflective Practice** – provides an opportunity for staff to assess their own understanding and performance against requirements

Managing Allegations of Reportable Conduct

AbSec supports agencies to undertake investigations and complete relevant reporting in line with statutory requirements. Training is also provided to assist staff to understand their obligations.

Direct advocacy and engagement

AbSec advocates on behalf of member agencies to address issues such as funding, contracting, referrals and consultation. Advocacy and engagement also serves the purpose to support AbSec in appropriate advising the Government and Government Departments on the most appropriate approaches to support Aboriginal children, families and communities.

Foster Support

The **Aboriginal State-wide Foster Care Support Service** (ASFCSS) is a free telephone advice and advocacy service for carers of Aboriginal children and young people in the child protection and out-of-home care sector.

The ASFCSS aims to improve the support and information provided to carers of Aboriginal children and young people while providing advice to front-line case managers in queries relating to culture, financial supports and working to raise awareness in Aboriginal communities of the need for more Aboriginal carers.

Foster Care Support provides AbSec Aboriginal out-of-home care member agencies with foster carer recruitment activities including events and promotions.

During this financial year, a total of 242 calls for advice, information and assistance were received and while some queries were resolved there are others that required ongoing support until an outcome or resolution could be determined.

Queries were received from kinship and foster carers, non-Aboriginal NGO OOHHC agencies, birth parents and community members. Some of the queries related to

- Payments – Carer allowance, Teenage Education Payment, late or irregular payments, contingency payments
- Guardianship Orders
- Wanting to become a foster carer or a carer of a family member
- Reporting children to be at risk – in family home, another placement
- Reassessment of CYP's cat score
- Placement support – behaviour management, placement reviews
- Carers Housing concerns
- Carers relocating
- Children being placed on respite and not being returned to placements
- Birth Family and family contact
- Carers Register
- Working with Children's Checks (WWCC) including application and outcome
- Cultural connections for a child or young person in care – finding mob, connecting with family



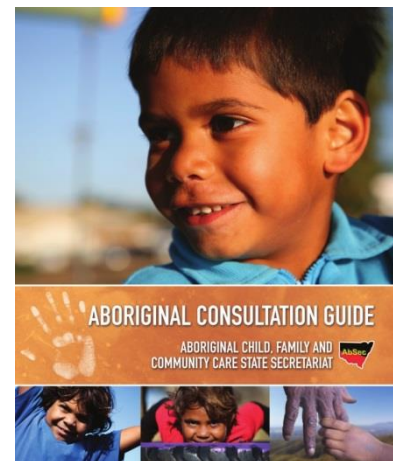
Cultural Support

Raising Aboriginal children and young people strong in culture and identity is essential for those in the child protection and out-of-home care (OOHC) sector. The question is how do we maintain the connection?

AbSec's Aboriginal Consultation Guide is one way in which the non-government OOHC sector can work consistently, effectively and sensitively with Aboriginal children, families and communities when providing early intervention or OOHC services.

The guide highlights legislative requirements that specifically relate to Aboriginal people including self-determination, participation in decision making and the Aboriginal Placement Principles. The guide also provides practical advice to assist NGOs to apply these requirements in their day to day work with Aboriginal children and families.

AbSec has been very active in promoting the need for better cultural planning for Aboriginal children and young people, essentially working to raise awareness and to strengthen the way in which government and non-government organisations undertake cultural planning. AbSec believes we need to work together to ensure the plans are meaningful and realistic, providing quality information that enables Aboriginal children and young people to have access to their culture and inform the development of their own identity as they transition into adulthood.



Disability Sector Development

The AbSec **Disability Sector Development Program** aims to work with interested Aboriginal community controlled organisations across NSW to become ready to provide supports for Aboriginal people with disability and their families as the nation prepares to transition to a National Disability Insurance Scheme (NDIS).

This includes:

- supporting capacity building work identifying where gaps need to be addressed to meet standards and safeguards for providing disability supports
- embedding a new way of thinking for organisations that aims to meet needs, rather than providing a standard service

AbSec is supporting organisations through the capacity building process to become strong providers of disability supports in Aboriginal communities, recognising the changed approach the NDIS will mean for providing services in communities.

We are doing this by:

- forming a partnership approach with interested organisations
- identifying gaps in meeting disability standards and safeguards
- developing and supporting ideas for improvements
- assessing all effort to build capacity at the end

There is a significant demand for services for Aboriginal people with disability in NSW and there are few ACCO disability service providers, leaving Aboriginal people with disability few choices available to them that are culturally inclusive. This means that there is a substantial market awaiting ACCOs who consider becoming disability service providers. If ACCOs decide to provide disability services, they will be playing a big part in delivering employment opportunities for Aboriginal people, while also providing a valuable support to Aboriginal people with disability, their families and carers.

Third Party Verification

This year AbSec successfully completed the **Quality Improvement Performance (QIP)** process in accordance with the requirements of the NSW Government. This is a great achievement for AbSec as part of the Disability Sector Development Program that are excited and proud to have completed.





AbSec received funding from Prime Minister and Cabinet to host healing workshops and cultural forums for members of the Council. These sessions although emotional provided participant's an opportunity to share their stories.

Members of the Stolen Generations Council NSW/ACT Incorporated attended the Kinchella Boys Home 90th Commemoration Anniversary from 24-26 October 2014 at Kempsey. The group attended the first gathering which was a meet and greet which was aimed at bringing everyone together to discuss the various activities for the 3 days.

Relationships Australia was introduced as the counselling support workers for the stolen generation members and their families for the duration of the Commemoration. Members attended the Commemoration exhibition held at Dunghutti-Ngaku Aboriginal Art Gallery, followed by the South West Rocks School Site Recognition Ceremony.

On the Saturday, the official 90th Commemoration event was held at the old Kinchella Boys Home site.

A full day of activities included.

- a photo exhibition (portraits of the KBH men)
 - VIP speeches (including Victor Dominello)
 - Stories from the KBH men themselves
 - KBH man Ian Lowe's 'Our Pain' CD launch
 - local Aboriginal entertainment
 - Cultural ceremonies, including welcome to country, traditional dance, and a KBH men's ceremony
 - Important family and community gatherings, including the children and grandchildren of the KBH men.
 - Cootamundra women speeches (Aunty Elaine) and also the Cootamundra Inc.
- The day finished at 4pm, everyone returned to Kempsey.

Then at 6pm, the official KBH 90th Commemoration Dinner Dance was held at the Dunghutti Elders Council. It was a deadly night. On the Sunday, there was the KBH 90th Commemoration Touch Football Knockout played. Overall, the ladies enjoyed being there to support the KBH men. It was very much a healing process for them, as Cootamundra girls as well. Sharing their stories and talking about the connections they have with the KBH men as many of them were in the Bomaderry Children's Home together. They talked about their brothers, cousins and husbands etc. that were in KBH. They share a strong bond; it's obvious they are family to each other.



For June Christian and Julie Welsh (AbSec staff), it was humbling to listen to the stories and seeing the connections between the stolen generations men and women who share very similar experiences growing up in the homes. It was wonderful to see the support given to the KBH men; they were overwhelmed by the attendance of family, friends and community. It was very special. Without the support of AbSec, the ladies would not have had the opportunity to attend this significant event. We would also like to acknowledge the hard work of the men and staff of KBH Inc for making it such a successful weekend.

Friday 13 February 2015 was the **7th anniversary of the apology to the Stolen Generations**.

Members of the Stolen Generation Council NSW/ACT attended the apology breakfast hosted by the NSW Government at Parliament House. Those present at the anniversary breakfast were addressed by Premier Mike Baird, Minister Dominello and Mr Kevin Rudd, with event MC Jeff McMullen. Mr Lester Maher (who was sent to Kinchela Boys Home) said: "Our stories are testimony that will ensure the past will not be repeated, something we fear when we hear of the alarming levels of Aboriginal children in out-of-home care."

The breakfast was well received from members of the Stolen Generation Council NSW/ACT who stressed it was important to acknowledge the apology however there is still more work to do to support members of the Stolen Generation.

The members attended a BBQ lunch at the NCIE in Redfern with community.

Wednesday 18 February 2015, seven members of the Stolen Generations Council NSW/ACT were invited to the launch of research Longterm Outcomes of Forgotten Australians Research at the University of NSW. This was launched by the Hon Justice Peter McClellan AM, Chair, Royal Commission into Instructional Responses to Child Sexual Abuse.

Members of the Stolen Generation Council NSW/ACT was felt this issue was contentious and that people should not forget or misplace the experiences of those of the Stolen Generation.

On Friday 27 February 2015, utilising the mirco-grant from the Healing Foundation, AbSec hosted a lunch at NCIE, Redfern for sixteen members of the Stolen Generations Council NSW/ACT.

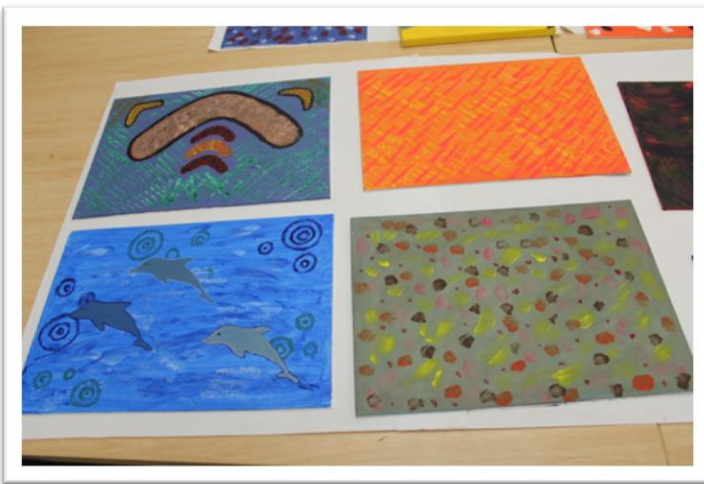
By chance members met Kyle Vander Kyup who spent time sharing his journey and experience with members.

Over lunch members had the opportunity to sharing stories and discussion around future workshops and gatherings should further funding become available.

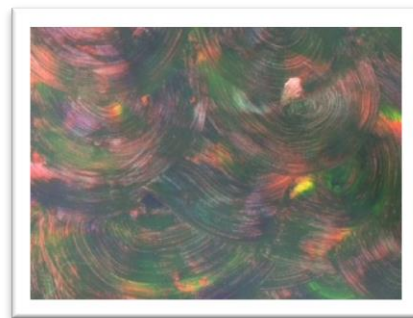
The lunch was enjoyed by all who attended, for some a therapeutic opportunity.



On Tuesday 27 and Wednesday 28 April 2015, AbSec hosted a cultural gathering for members of the Stolen Generation Council NSW/ACT with funding provided by the Healing Foundation. The gathering was an artwork workshop attended by 15 members and facilitated by Christine Blakney and Matilda House. The beautiful works that were produced as part of the workshop will be exhibited later in the year. Feedback from members was that it was an enjoyable workshop that provided them an opportunity to share experiences and interpret those stories into art.



Some of the artwork done by members of the Stolen Generation



Cleansing and Healing Gathering

Brian Dowd The People Mechanic Brian Dowd —The People Mechanic-facilitated the 2 day Cleansing and Healing Gathering for members of the Stolen Generation NSW/ACT. The aim of the gathering was to engage those affected directly and indirectly by past government practice.

Those in attendance will had the opportunity to participate in a gathering that was culturally friendly and confidential, and focused on allowing individuals to develop new structures, routines and balances to:

- Cleanse past hurts
- To heal current pain
- Un program the negative voices and the faces of the past.
- Re Program positive directions for not only ourselves, but the faces of the future.
- Apply these techniques at home for positive spiritual and physical results

The workshop was enjoyed by participants with feedback from members positive and emotional.



Workforce Development

Aboriginal Family Group Conferencing Certificate IV Course

AbSec worked in partnership with the Aboriginal Learning Circle and TAFE NSW to develop the Certificate IV in Community Services (Aboriginal Family Group Conferencing) course.

The course enabled participants to develop skills and knowledge to undertake a range of tasks associated with the organisation and coordination of Aboriginal Family Group Conference meetings, relative to addressing care and protection issues for Aboriginal children and young people at risk in the community services sector.

The course targeted Aboriginal and Torres Strait Islander community members who have relevant minimum Certificate III level qualifications, and a minimum three years of community services industry experience.

The program was held in Port Macquarie with participants required to attend four, one week blocks over four months with the first block held early 2015.



Diploma Child, Youth and Family Intervention

The Diploma Child, Youth and Family Intervention was delivered after an expression of interest process was undertaken by AbSec with our member agencies, with 20 caseworkers signing up to take part in completing the Diploma.

The Diploma was delivered in partnership with the Aboriginal Learning Circle and NSW TAFE in Sydney over three day blocks with the final session expected to end in September 2015. The Diploma includes workplace visits and is split into five streams focused on providing formal qualifications for Aboriginal workers that complement their existing practical experience.

Aboriginal Jobs Together

The Aboriginal Jobs Together (AJT) Program was a joint venture between AbSec, Department of Education and Communities, Aboriginal Affairs and Department of Prime Minister and Cabinet (formerly Department of Education, Employment and Workplace Relations).

The AJT program was part of the Indigenous Employment Program, which has the objective of increasing employment opportunities for Aboriginal people.

The program saw trainees undertake study and on the job training. While not all contracts were successfully filled, five out of seven trainees successfully completed their traineeship.

The AJT program is a great initiative for young people seeking to enter the Community Services sector. Unfortunately, this program has concluded and no further resourcing has been identified

Community Engagement

AbSec participates in a range of community activities throughout the year with a number of the events aimed at raising awareness in Aboriginal communities to increase Aboriginal foster and kinship carers across the state.

NAIDOC Week was held from 6-13 July 2014, which coincided with the second week of the school holidays. There were lots of events around communities and it was a great opportunity to join in and celebrate Aboriginal culture. This year's theme was Serving Country—Centenary and Beyond.

AbSec staff attended a range of events throughout NAIDOC week to share in celebrations and continually promote AbSec's objective around providing a safe place for Aboriginal children and young people, strong in culture.



AbSec attended the **National Aboriginal and Islander Children's Day** event at Redfern Park on 4 August 2014 and provided information on AbSec services and handed out promotional bags made up for children and their families. It was great to see the community turnout for this event, celebrating our children.

Foster Care Week Picnic Day was a huge success!

The Annual Foster Care Week Picnic Day was held in the Western Sydney Parklands on Sunday, 14 September 2014. There were over 900 people who attended the annual picnic, which was the launch of foster care week. The picnic day is also a way of saying 'thank you' to Foster Carers and their families who support vulnerable children and young people in the out-of-home care system.

We were pleased to have Chris Tobin, a Darug man from Western Sydney welcome everyone to Country. The former Minister for Family and Community Services, The Hon. Gabrielle Upton MP opened the event.

Children and young people were able to enjoy the activities on the day, which included a petting zoo, pony rides, activities with the University of Western Sydney, African Drumming Workshops, the Bubble Man and many more. Everyone could also enjoy lunch which included hamburgers, drinks, snow cones and more. The whole day was a free event for carers and their families to enjoy.

It was especially good to see carers of Aboriginal children and young people, as well as meet new carers who came up to the AbSec Stall and said hi. The day was a great success and we received lots of positive feedback about the venue and how much Carers and their families enjoyed the picnic day. If you weren't able to make this year's picnic day, keep this event in mind for next year, as it's a great way to connect and enjoy with your family.



The NSW Department of Family and Community Services hosted **Mana Allawah**, an event to engage local Aboriginal families, children, elders and young people living in the Northern Sydney area.

The Mana Allawah Aboriginal Summit took place on 17 July 2014 at Macquarie University, coinciding with the end of the Guringai Festival – an event celebrating Australia's First Peoples culture in the Northern Sydney Region.

The event included yarning circles with community leaders and services expos where information regarding employment, health and education services was available, family friendly activities such as a jumping castle, women's sports clinic and an Aboriginal artefacts display.

AbSec had the opportunity to showcase the programs and work that is delivered by the organisation. AbSec were happy to be involved in an event such as this, which is the first of its kind to be held in the Northern Sydney area, targeting Aboriginal people living in Ryde, Hunters Hill, Hornsby, Ku-ring-gai, Lane Cove, Willoughby, North Sydney, Mosman, Manly, Warringah and Pittwater local government area



Recruitment of Carers - Kids in Care Cup 2014 (KICC)

AbSec was the major sponsor for the Kids in Care Cup 2014, which is an initiative of the Illawarra Titans RLFC. The Kids in Care Cup is a Koori Knockout and a genuine warm up event to the NSW Aboriginal Rugby League Knockout.

The event aims to raise awareness in Aboriginal communities of the need to recruit more Aboriginal foster and kinship carers to care for Aboriginal children and young people in out-of-home care.

Twenty-three Aboriginal rugby league teams competed in the **Kids in Care Cup** on Saturday, 20 September 2014, representing their region in the state-wide competition to highlight the need for Aboriginal foster carers during Foster Care Week.

Teams competed at Sid Parrish Park, Figtree in Wollongong with the ***Dalai Dreamers*** (from Kempsey and Armidale) winning the fiercely contested **Kids in Care Cup** beating the ***Newcastle All Blacks*** 12 – 6.

Around 3,000 people turned up to watch the ten specially formed adult Aboriginal men's rugby league teams from regions around NSW battle it out for the **Kids in Care Cup** title. This included, three women's teams, *the Illawarra Titans*, *Campbelltown Ghosts* and the *Narooma Sharks* as well as ten local kids' teams made up from the *Coal League All Stars* and the *Illawarra Titans Juniors* who also competed in specialty games including running competitions.

Illawarra, South Coast, Port Stephens, Hunter, Northern NSW, Kempsey, Shoalhaven, La Perouse & Marrickville.



Achievements

On 19 August 2014, the Association of Children's Welfare Agencies (ACWA) 2014 Sector Achievement Awards presented AbSec with the Innovation award, which was announced during the Awards dinner at Parliament House.

The Innovation award acknowledges new and creative responses to emerging needs or entrenched sector challenges. The award is significant recognition for the hard work and effort performed by the AbSec Transition team, and their commitment and passion for ensuring a better future for Aboriginal children and young people in OOHC.

AbSec considers this award to be a true reflection of the hard work, commitment and dedication in supporting Aboriginal children and young people in OOHC by building a sustainable Aboriginal sector focused on ensuring Aboriginal children are linked to culture, identity and community.

AbSec is pleased to share this award with Aboriginal OOHC member agencies, as it's their hard work, dedication and contribution to the sector that goes to the heart of self-determination for Aboriginal communities and to the wellbeing of our children in care.



Contact Us

The Aboriginal Child, Family and Community Care State Secretariat (AbSec) can be contacted on

A: 21 Carrington Road Marrickville NSW 2204

P: PO Box 604 Marrickville NSW 1475

Ph: (02) 9559 5299

Fax: (02) 9559 1669

W: www.absec.org.au



The **Aboriginal State-wide Foster Care Support Service** on 1800 888 698

**ABORIGINAL CHILD FAMILY AND
COMMUNITY CARE STATE SECRETARIAT (NSW) INC.
A.B.N. 22 477 168 898**

**FINANCIAL REPORT FOR THE YEAR ENDED
30TH JUNE, 2015**

**ABORIGINAL CHILD FAMILY AND
COMMUNITY CARE STATE SECRETARIAT (NSW) INC.
A.B.N. 22 477 168 898**

Contents	Page #
Committee's Report	2
Income and Expenditure Statement	3 - 5
Asset and Liabilities Statement	6 - 7
Statement of Cash Flows	8 - 9
Statement of Changes in Equity	10
Notes to Financial Statements	11 - 17
Statement by Members of the Committee	18

**ABORIGINAL CHILD FAMILY AND
COMMUNITY CARE STATE SECRETARIAT (NSW) INC.
A.B.N. 22 477 168 898**

COMMITTEE'S REPORT – 2015

Your Committee Members submit the financial report of Aboriginal Child, Family and Community Care State Secretariat (NSW) Inc. ("the Association") for the financial year ended 30 June 2015.

COMMITTEE MEMBERS

The committee members at any time during the financial year and up to the date of this report comprised representatives of member agencies. The name of those member agency representatives were:-

Dana Clarke (Chairperson)	Barbara Kelly (resigned October 2014)
Kathy McKenzie (Vice Chairperson appointed October 2014)	David Kelly (resigned October 2014)
Tina McGhie (Secretary appointed October 2014)	Lenore Marlowe (resigned October 2014)
Garry Matthews (Treasurer)	Petrice Manton (appointed October 2014)
Ernest Lovelock	Cecily Lyons (appointed October 2014 then resigned 31 May 2015)
Craig Ardler (resigned October 2014)	Denis Jackson (appointed October 2014)

PRINCIPAL ACTIVITIES

The principal activities of the Association during the financial year were to provide support and advocacy services to member foster care agencies throughout NSW.

SIGNIFICANT CHANGES

No significant change in the nature of these activities occurred during the year.

OPERATING RESULT

The surplus from ordinary activities for the financial year amount to \$98,229 (surplus 2014 year \$1,177,814)

Signed in accordance with a resolution of the Members of the Committee.



Name: Dana Clarke
Position: Chair



Name: GARRY MATTHEWS
Position: TREASURER

Dated 22nd day of OCTOBER 2015.

**ABORIGINAL CHILD FAMILY AND
COMMUNITY CARE STATE SECRETARIAT (NSW) INC.
A.B.N. 22 477 168 898**

**INCOME AND EXPENDITURE STATEMENT
FOR THE YEAR ENDED 30TH JUNE, 2015**

	2015	2014
	\$	\$
INCOME		
ADHC 30067-01-001	750,000	750,000
PACT Statewide002 (FCG)	-	424,615
PACT Statewide003	248,000	240,000
Healing 1	600	700
DEEWR-AJT Cadets	-	(16,909)
DEEWR-AJT Traineeships	5,727	-
Activity 99160021	71,454	164,636
Dept FaCS-Transition Funding	1,325,000	1,400,000
DOCS-ABSEC Core Funding	632,678	473,413
DOCS-Aboriginal Foster Care Support Service	192,827	187,027
DOCS-Aboriginal services Training/Development	-	140,767
OATSIH CootaBTH-Councillors	110,800	110,802
DOCS-Keep Them Safe 005 PEER	-	650,374
Coota Variation 4 – Basket Weave	-	80,000
Conference Registrations	-	33,427
Conference Sponsorships	-	42,273
Conference Exhibition	-	4,000
Conference Dinner	-	9,400
Consultancy Fees Received	654	-
Membership Fees	10,060	10,640
Marumali workshop (Heal 2)	-	62,200
Interest Received	111,770	106,455
Other Income	-	3,640
PPL Centrelink	-	4,980
Profit on disposal of assets	27,329	13,189
Program Administration Fee	43,060	-
Rental Income Received	3,273	-
	<hr/>	<hr/>
Total Income	3,533,232	4,895,629
	<hr/>	<hr/>

The accompanying Notes form part of these Financial Statements

**ABORIGINAL CHILD FAMILY AND
COMMUNITY CARE STATE SECRETARIAT (NSW) INC.
A.B.N. 22 477 168 898**

**INCOME AND EXPENDITURE STATEMENT
FOR THE YEAR ENDED 30TH JUNE, 2015**

	2015	2014
	\$	\$
EXPENSES		
Accountancy	5,650	7,490
Agency Support Fees	181,818	59,952
Audit Fees	10,000	10,000
Bank Fees and Charges	879	1,143
Bad Debts	200	-
Basket Weaving	16,459	-
Board Governance	8,504	-
Board Travel and Related Costs	21,925	18,709
Carer Support	5,896	13,243
Community Support	80	1,389
Cleaning and Recycling Costs	14,799	14,380
Conference Expenses	3,859	59,995
Consultants Fees	266,707	76,425
Depreciation – Plant/Equipment/Vehicles	91,150	102,472
Depreciation – Buildings	20,099	25,060
Donations – Other	150	1,073
Dues and Subscriptions	10,136	16,966
Electricity	13,752	13,644
Entertainment – EO discretion	-	161
Fees & Charges	53	614
Fines	-	203
Fringe Benefits Tax	21,454	31,822
Healing Forum	20,051	14,229
Insurance	21,640	20,805
Insurance – Workers Compensation	8,383	4,815
Interest Expense	140	4
IT Related Costs	57,863	63,930
Legal Fees	14,362	15,105
Loss on Sale of Fixed Assets	4,444	-
Marketing	46,408	32,723
Meeting Costs	26,066	41,025
Minor Assets Written Off	2,850	14,060
Motor Vehicle Expenses	66,160	104,680
Office Equipment Maintenance	1,193	917
Office Maintenance	11,869	3,238

The accompanying Notes form part of these Financial Statements

**ABORIGINAL CHILD FAMILY AND
COMMUNITY CARE STATE SECRETARIAT (NSW) INC.
A.B.N. 22 477 168 898**

**INCOME AND EXPENDITURE STATEMENT
FOR THE YEAR ENDED 30TH JUNE, 2015**

	2015	2014
	\$	\$
EXPENSES (Continued)		
	2,933	4,020
Postage and Shipping		
Printing and Stationery	18,277	33,430
Provision for Annual/RDO/In Lieu Leave	(37,122)	44,859
Rates & Land Taxes	4,837	4,711
Rent	13,138	14,601
Salaries – Taxable	1,657,718	1,724,486
Other Employment Costs	12,949	4,424
Salary Sacrifice – FBT	245,572	292,036
Salary Sacrifice – Meal Entertainment	32,809	44,762
Salary Sacrifice – ETP for Expenses	-	5,628
Sponsorship	13,643	58,140
Staff Amenities	6,141	5,976
Staff Training	7,950	18,925
Superannuation	199,468	200,884
Taxis – Personal (FBT Liable)	877	683
Telephone	27,853	39,000
Trainee/Cadet Support	81,452	73,051
Training Forums	8,394	120,451
Training Materials	-	6,140
Travel and Conferences	161,915	247,336
Travel Subsidies for Trainees	1,200	4,000
	<hr/>	<hr/>
TOTAL EXPENSES	3,435,003	3,717,815
	<hr/>	<hr/>
NET PROFIT FROM ORDINARY ACTIVITIES BEFORE INCOME TAX	98,229	1,177,814
	<hr/>	<hr/>

The accompanying Notes form part of these Financial Statements

**ABORIGINAL CHILD FAMILY AND
COMMUNITY CARE STATE SECRETARIAT (NSW) INC.
A.B.N. 22 477 168 898**

**ASSETS AND LIABILITIES STATEMENT
AS AT 30TH JUNE, 2015**

	Note	2015 \$	2014 \$
ASSETS			
CURRENT ASSETS			
Cash Assets	2	3,826,368	6,073,580
Receivables	3	9,013	19,342
Other Assets	4	7,469	-
		<hr/>	<hr/>
TOTAL CURRENT ASSETS		3,842,850	6,092,922
		<hr/>	<hr/>
NON-CURRENT ASSETS			
Property, Plant and Equipment	5	1,401,102	1,393,852
		<hr/>	<hr/>
TOTAL NON-CURRENT ASSETS		1,401,102	1,393,852
		<hr/>	<hr/>
TOTAL ASSETS		5,243,952	7,486,774
		<hr/>	<hr/>
LIABILITIES			
CURRENT LIABILITIES			
Payables	6	128,899	72,551
Current Tax Liabilities	8	26,755	312,171
Provisions	9	125,371	162,493
Other Liabilities	10	1,200,000	3,275,000
		<hr/>	<hr/>
TOTAL CURRENT LIABILITIES		1,481,025	3,822,215
		<hr/>	<hr/>
NON-CURRENT LIABILITIES			
Financial Liabilities	7	199	60
		<hr/>	<hr/>
TOTAL NON-CURRENT LIABILITIES		199	60
		<hr/>	<hr/>
TOTAL LIABILITIES		1,481,224	3,822,275
		<hr/>	<hr/>
NET ASSETS		3,762,728	3,664,499
		<hr/>	<hr/>

The accompanying Notes form part of these Financial Statements

**ABORIGINAL CHILD FAMILY AND
COMMUNITY CARE STATE SECRETARIAT (NSW) INC.
A.B.N. 22 477 168 898**

**ASSETS AND LIABILITIES STATEMENT
AS AT 30TH JUNE, 2015**

	Note	2015 \$	2014 \$
MEMBERS' EQUITY			
Opening Balance		3,664,499	2,486,685
Current Year Profit		98,229	1,177,814
		<hr/>	<hr/>
TOTAL MEMBERS' EQUITY		3,762,728	3,664,499
		<hr/>	<hr/>

The accompanying Notes form part of these Financial Statements

**ABORIGINAL CHILD FAMILY AND
COMMUNITY CARE STATE SECRETARIAT (NSW) INC.
A.B.N. 22 477 168 898**

**STATEMENT OF CASH FLOWS
FOR THE YEAR ENDED 30TH JUNE, 2015**

	Note	2015 \$	2014 \$
CASH FLOW FROM OPERATING ACTIVITIES			
Receipts from Grants and other operating activities		1,356,634	5,510,907
Payments to Suppliers and Employees		(3,620,143)	(3,352,137)
Interest Received		111,770	106,455
		<hr/>	<hr/>
Net Cash provided by Operating Activities	2	(2,151,739)	2,265,225
		<hr/>	<hr/>
CASH FLOW FROM INVESTING ACTIVITIES			
Proceeds from Sale of Property, Plant and Equipment		104,714	53,966
(Payment for Property), Plant and Equipment		(200,326)	(98,917)
		<hr/>	<hr/>
Net Cash (used in) Investing Activities		(95,612)	(44,951)
		<hr/>	<hr/>
CASH FLOW FROM FINANCING ACTIVITIES			
Proceeds from Borrowings		139	4
Repayment of Borrowings		-	-
		<hr/>	<hr/>
Net Cash (used in) Financing Activities		139	4
		<hr/>	<hr/>
Net Increase/(Decrease) in Cash Held		(2,247,212)	2,220,278
Cash at beginning of year	1	6,073,580	3,853,302
		<hr/>	<hr/>
CASH AT END OF YEAR		3,826,368	6,073,580
		<hr/>	<hr/>

The accompany Notes form part of these financial statements

**ABORIGINAL CHILD FAMILY AND
COMMUNITY CARE STATE SECRETARIAT (NSW) INC.
A.B.N. 22 477 168 898**

**STATEMENT OF CASH FLOWS
FOR THE YEAR ENDED 30TH JUNE, 2015**

1. RECONCILIATION OF CASH

For the purposes of this Statement of Cash Flows, cash includes:-

- (i) Cash on hand and in at call deposits with banks or financial institutions, net of bank overdrafts; and
- (ii) Investments in money market instruments which are readily convertible to cash.

Cash at the end of the year is shown in Balance sheet as:-

	2015	2014
	\$	\$
Cash on Hand	1,100	1,100
Cash at Bank and in At Call Deposits with Financial Institutions	3,825,268	6,072,480
	<hr/>	<hr/>
	3,826,368	6,073,580
	<hr/>	<hr/>

2. RECONCILIATION OF CASH FLOW FROM OPERATIONS WITH OPERATING PROFIT AFTER INCOME TAX

Operating Profit after Income Tax	98,229	1,177,814
Non-Cash Flows in Operating Profit		
Depreciation & Amortisation	88,362	114,393
Increase/(Decrease) in Provisions	(37,122)	43,611
Increase/(Decrease) in Tax Liabilities	(285,416)	252,929
Changes in Assets and Liabilities		
(Increase)/Decrease in Trade and Other debtors	10,329	(11,330)
(Increase)/Decrease in Other Assets	(7,469)	-
Increase/(Decrease) in Grants in Advance	(2,075,000)	732,287
Increase/(Decrease) in Trade and Other Payables	56,348	(44,479)
	<hr/>	<hr/>
Cash Flow provided by Operations	(2,151,739)	2,265,225
	<hr/>	<hr/>

**ABORIGINAL CHILD FAMILY AND
COMMUNITY CARE STATE SECRETARIAT (NSW) INC.
A.B.N. 22 477 168 898**

**STATEMENT OF CHANGES IN EQUITY
FOR THE YEAR ENDED 30TH JUNE, 2015**

	Note	2015 \$	2014 \$
OPENING BALANCE			
Balance Carried Forward from Previous Period		3,664,499	2,486,685
Adjustment for Changes in Accounting Policies		-	-
		<hr/>	<hr/>
Adjusted Opening Balance		3,664,499	2,486,685
COMPREHENSIVE INCOME			
Other Comprehensive Income		-	-
Surplus/(Deficit) for the period		98,229	1,177,814
		<hr/>	<hr/>
TOTAL COMPREHENSIVE INCOME		98,229	1,177,814
Contributed Equity/Capital		-	-
		<hr/>	<hr/>
CLOSING BALANCE ATTRIBUTABLE TO ASSOCIATION		3,762,728	3,664,499
		<hr/>	<hr/>

**ABORIGINAL CHILD FAMILY AND
COMMUNITY CARE STATE SECRETARIAT (NSW) INC.
A.B.N. 22 477 168 898**

**NOTES TO AND FORMING PART OF THE FINANCIAL STATEMENTS
FOR THE YEAR ENDED 30TH JUNE, 2015**

1. STATEMENT OF SIGNIFICANT ACCOUNTING POLICIES

The financial report of the Aboriginal Child Family and Community Care State Secretariat (NSW) Inc. ("the Association") is a special purpose financial report prepared in order to satisfy the requirements of the Department of Community Services and other Government Departments. The members of the Committee have determined that the Association is not a reporting entity.

The financial report is also prepared on an accruals basis and is based on historic costs and does not take into account changing money values or, except where specifically stated, current valuation of non-current assets.

Accounting Policies

(a) Income Tax

The Association is registered as an income tax exempt entity under Section 50 of the Income Tax Assessment Act 1997, accordingly, no provision for income tax is necessary nor is one represented in these accounts.

(b) Property, Plant and Equipment

Land is included at cost, independent of the entity's valuation. Buildings are carried at cost less, where applicable, any accumulated depreciation.

Plant and equipment are carried at cost less, where applicable, any accumulated depreciation.

The depreciable amount of all plant and equipment are depreciated over the useful lives of the assets to the Association commencing from the time the asset is held ready for use.

Leasehold improvements are amortised over the shorter of either the unexpired period of the lease or the estimated useful lives of the improvements.

(c) Employee Entitlements

Provision for employee benefits in the form of Long Service Leave, Annual Leave, Rostered Days Off and Time in Lieu have been made for the estimated accrued entitlements, including on-costs, of all employees on the basis of their terms of employment.

In the case of Long Service Leave, any accrual has been measured by reference to periods of service and current salary rates as it is considered that this results in an amount not materially different to that achieved by discounting estimated future cash flows.

**ABORIGINAL CHILD FAMILY AND
COMMUNITY CARE STATE SECRETARIAT (NSW) INC.
A.B.N. 22 477 168 898**

**NOTES TO AND FORMING PART OF THE FINANCIAL STATEMENTS
FOR THE YEAR ENDED 30TH JUNE, 2015**

1. STATEMENT OF SIGNIFICANT ACCOUNTING POLICIES (Continued)

(d) Subsequent Events

There has not arisen, since the end of the financial year, any matter or circumstance that has, or may, significantly affect the operation of the Association, the results of those operations or the state of affairs of the Association in future financial years that are not otherwise disclosed in this financial report.

(e) Revenue

Non-reciprocal grant revenue is recognised in profit or loss when the entity obtains control of the grant and it is probable that the economic benefits gained will flow to the entity and the amount of the grant can be measured reliably.

If conditions are attached to the grant which must be satisfied before it is eligible to receive the contribution, the recognition of the grant as revenue will be deferred until those conditions are satisfied.

When grant revenue is received whereby the entity incurs an obligation to deliver economic value directly back to the contributor, this is considered a reciprocal transaction and the grant revenue is recognised in the statement of financial position as a liability until the service has been delivered to the contributor, otherwise the grant is recognised as income on receipt.

Grant revenue is recognised in the Income and Expenditure Statement when the entity obtains control over the funds, which is generally at the time of receipt unless the grant is clearly identified as relating to future periods. In this event, it is shown as "Grants in Advance" and brought to account progressively in the Income and Expenditure Statement over the period of the grant.

Interest revenue is recognised on a proportional basis taking into account the interest rates applicable to the financial assets.

All revenue is stated net of the amount of goods and services tax.

(f) Comparative Figures

Where required by Accounting Standards, comparative figures have been adjusted to conform to changes in presentation for the current financial year.

**ABORIGINAL CHILD FAMILY AND
COMMUNITY CARE STATE SECRETARIAT (NSW) INC.
A.B.N. 22 477 168 898**

**NOTES TO AND FORMING PART OF THE FINANCIAL STATEMENTS
FOR THE YEAR ENDED 30TH JUNE, 2015**

1. STATEMENT OF SIGNIFICANT ACCOUNTING POLICIES (Continued)

(g) Goods and Services Tax (GST)

Revenues, expenses and assets are recognised net of the amount of the goods and services tax (GST), except where the amount of GST incurred is not recoverable from the Australia Taxation Office (ATO). In these circumstances the GST is recognised as part of the cost of acquisition of the asset or as part of an item of expense.

Receivables and payables in the Assets and Liabilities Statement are shown inclusive of GST.

The net amount of GST recoverable from, or payable to, the ATO is included as a current asset or liability in the Assets and Liabilities Statement.

(h) Operating Segment

The Association is incorporated under the Associations Incorporation Act 2009 and operates predominantly in one business and geographical segment being the provision of support and advocacy services to member foster care agencies throughout NSW.

(i) Cash and Cash Equivalents

Cash and cash equivalents include cash on hand, deposits held at-call with banks, other short-term highly liquid investments with original maturities of three months or less, and bank overdrafts. Bank overdrafts are shown within borrowings in current liabilities on the Assets and Liabilities Statement.

(j) Impairment of Assets

At the end of the reporting period, the committee reviews the carrying amounts of its tangible and intangible assets to determine whether there is any indication that these assets have been impaired. If such an indication exists, an impairment test is carried out on the asset by comparing recoverable amount of the asset, being the higher of the asset's fair value less costs to sell and value in use, to the asset's carrying amount. Any excess of the assets carrying amount over its recoverable amount is recognised in the Income and Expenditure Statement.

**ABORIGINAL CHILD FAMILY AND
COMMUNITY CARE STATE SECRETARIAT (NSW) INC.
A.B.N. 22 477 168 898**

**NOTES TO AND FORMING PART OF THE FINANCIAL STATEMENTS
FOR THE YEAR ENDED 30TH JUNE, 2015**

	2015 \$	2014 \$
2. CASH ASSETS		
Bank Accounts:		
Cash at Bank - CBA Cheque Account	56,683	38,644
Cash at Bank - ING On-Call Account	103,381	245,400
Cash at Bank – CBA Online Account	214,704	3,031,772
Cash at Bank – CBA DGR Account	500	500
Commonwealth Bank Term Deposits	3,450,000	2,756,164
Other Cash Items:		
Petty Cash	900	900
Petty Cash – Paul (FGC)	200	200
	<hr/>	<hr/>
	3,826,368	6,073,580
	<hr/>	<hr/>
<i>The Association currently maintains a mortgage offset account with the Commonwealth Bank of Australia in respect of its property located at 21 Carrington Rd, Marrickville NSW (refer to Note 7) amounting to \$630,000. As at 30 June 2015, the unused portion of this facility amounts to \$629,801. This facility is at call.</i>		
3. RECEIVABLES		
Current		
Trade Debtors	7,906	18,078
RTA E-Toll Account	1,107	920
Other Debtor – Cabcharge	-	344
	<hr/>	<hr/>
	9,013	19,342
	<hr/>	<hr/>
4. OTHER ASSETS		
Current		
Deposits Paid	7,469	-
	<hr/>	<hr/>
	7,469	-
	<hr/>	<hr/>

**ABORIGINAL CHILD FAMILY AND
COMMUNITY CARE STATE SECRETARIAT (NSW) INC.
A.B.N. 22 477 168 898**

**NOTES TO AND FORMING PART OF THE FINANCIAL STATEMENTS
FOR THE YEAR ENDED 30TH JUNE, 2015**

	2015 \$	2014 \$
5. PROPERTY, PLANT AND EQUIPMENT		
Land/Buildings:		
Land – 21 Carrington Rd, Marrickville – at cost	350,000	350,000
Building – 21 Carrington Rd, Marrickville – at cost	803,948	803,948
Less: Accumulated Depreciation	(79,076)	(58,977)
	<hr/> 1,074,872	<hr/> 1,094,971
Furniture and Fittings (Marrickville):		
- At cost	134,807	132,307
- Less: Accumulated Depreciation	(35,346)	(25,519)
	<hr/> 99,461	<hr/> 106,788
Computer Equipment:		
- At cost	111,191	104,758
- Less: Accumulated Depreciation	(92,392)	(79,315)
	<hr/> 18,799	<hr/> 25,443
Office Furniture and Fittings:		
- At cost	45,298	45,298
- Less: Accumulated Depreciation	(34,256)	(30,725)
	<hr/> 11,042	<hr/> 14,573
Motor Vehicles:		
- At cost	267,364	273,653
- Less: Accumulated Depreciation	(70,436)	(121,576)
	<hr/> 196,928	<hr/> 152,077
	<hr/> 1,401,102	<hr/> 1,393,852

**ABORIGINAL CHILD FAMILY AND
COMMUNITY CARE STATE SECRETARIAT (NSW) INC.
A.B.N. 22 477 168 898**

**NOTES TO AND FORMING PART OF THE FINANCIAL STATEMENTS
FOR THE YEAR ENDED 30TH JUNE, 2015**

	2015 \$	2014 \$
6. PAYABLES		
Unsecured:		
Trade Creditors	22,467	59,152
Accrued Expenses	105,310	12,000
Mobile Phone Employees – to be repaid	-	84
Master Card - D. Clarke	1,006	1,298
Master Card - E.O.	-	17
Master Card – D.C.E.O.	116	-
	<hr/>	<hr/>
	128,899	72,551
	<hr/>	<hr/>
7. FINANCIAL LIABILITIES		
Non-Current		
Secured:		
CBA Loan Account 200014002863	199	60
	<hr/>	<hr/>
	199	60
	<hr/>	<hr/>
<i>The Association currently maintains a mortgage offset account with the Commonwealth Bank of Australia in respect of its property located at 21 Carrington Rd, Marrickville NSW (refer to Note2) amounting to \$630,000. As at 30 June 2015, the unused portion of this facility amounts to \$629,801. This facility is at call.</i>		
8. TAX LIABILITIES		
Current		
GST payable/(refundable)	(1,096)	277,709
PAYG withholding tax payable	27,851	34,462
	<hr/>	<hr/>
	26,755	312,171
	<hr/>	<hr/>

**ABORIGINAL CHILD FAMILY AND
COMMUNITY CARE STATE SECRETARIAT (NSW) INC.
A.B.N. 22 477 168 898**

**NOTES TO AND FORMING PART OF THE FINANCIAL STATEMENTS
FOR THE YEAR ENDED 30TH JUNE, 2015**

	2015 \$	2014 \$
9. PROVISIONS		
Current		
Provision for Annual Leave	96,988	116,545
Provision for Rostered Day Off	7,116	8,709
Provision for Time in Lieu	3,341	12,164
Provision for Long Service Leave	17,926	25,075
	<hr/> 125,371 <hr/>	<hr/> 162,493 <hr/>
10. OTHER LIABILITIES		
Current		
Grants in Advance:		
Department of FaCS - Ageing, Disability & Homecare	-	875,000
Department of FaCS - CS	1,200,000	2,400,000
	<hr/> 1,200,000 <hr/>	<hr/> 3,275,000 <hr/>

11. ECONOMIC DEPENDENCY/GOING CONCERN

The ongoing operation of Aboriginal Child Family and Community Care State Secretariat (NSW) Inc. is financially dependent upon the continued support of funding bodies for recurrent grant income. This financial report has been prepared on a going concern basis, which contemplates continuity of normal operating activities and the realisation of assets and settlement of liabilities in the normal course of the Association's operations.

12. ASSOCIATION DETAILS

The registered office and principal place of business of the Association is:

Aboriginal Child, Family and Community Care State Secretariat (NSW) Inc.
21 Carrington Road
Marrickville NSW 2204

STATEMENT BY MEMBERS OF THE COMMITTEE

The Committee has determined that the Aboriginal Child Family and Community Care State Secretariat (NSW) Inc. is not a reporting entity and that this special purpose financial report should be prepared in accordance with the accounting policies outlined in Note 1 to the financial statements.

1. The financial statements and notes present fairly the Association's financial position as at 30 June 2015 and its performance for the year ended on that date in accordance with the accounting policies described in Note 1 to the financial statements.
2. At the date of this statement, there are reasonable grounds to believe that the Association will be able to pay its debts as and when they become due and payable.

This statement is made with a resolution of the Committee and is signed for and on behalf of the Committee by:



Name:

Dave Clarke

Position:

Chair



Name:

GARRY MATTHEWS

Position:

TREASURER

Dated: 22nd day of October 2015



**Independent Auditor's Report to the Members of the
Aboriginal Child, Family and Community Care State Secretariat
(NSW) Inc.**

We have audited the accompanying financial report, being a special purpose financial report, of the Aboriginal Child, Family and Community Care State Secretariat (NSW) Inc. ("the Association"), which comprises the committee's report, the assets and liabilities statement as at 30 June 2015, the income and expenditure statement for the year then ended, notes comprising a summary of significant accounting policies and other explanatory information and the statement by members of the committee.

Committee's Responsibility for the Financial Report

The committee of the Aboriginal Child, Family and Community Care State Secretariat (NSW) Inc. is responsible for the preparation and fair presentation of the financial report, and has determined that the basis of preparation described in Note 1 is appropriate to meet the requirements of the *Associations Incorporation Act 2009* and is appropriate to meet the needs of the members. The committee's responsibility also include such internal control as the committee determines is necessary to enable the preparation and fair presentation of a financial report that is free from material misstatement, whether due to fraud or error.

Auditor's Responsibility

Our responsibility is to express an opinion on the financial report based on our audit. We have conducted our audit in accordance with Australian Auditing Standards. Those standards require that we comply with relevant ethical requirements relating to audit engagements and plan and perform the audit to obtain reasonable assurance whether the financial report is free from material misstatement.

An audit involves performing procedures to obtain audit evidence about the amounts and disclosures in the financial report. The procedures selected depend on the auditor's judgment, including the assessment of the risks of material misstatement of the financial report, whether due to fraud or error. In making those risk assessments, the auditor considers internal control relevant to the association's preparation and fair presentation of the financial report, in order to design audit procedures that are appropriate in the circumstances, but not for the purpose of expressing an opinion on the effectiveness of the association's internal control.



An audit also includes evaluating the appropriateness of accounting policies used and the reasonableness of accounting estimates made by the committee, as well as evaluating the overall presentation of the financial report.

We believe that the audit evidence we have obtained is sufficient and appropriate to provide a basis for our audit opinion.

Opinion

In our opinion, the financial report presents fairly, in all material respects, the financial position of the Aboriginal Child, Family and Community Care State Secretariat (NSW) Inc. as at 30 June 2015 and its financial performance for the year then ended in accordance with the accounting policies described in Note 1 to the financial statements, and the requirements of the *Associations Incorporation Act 2009*.

Basis of Accounting and Restriction on Distribution

Without modifying our opinion, we draw attention to Note 1 to the financial report, which describes the basis of accounting. The financial report has been prepared to assist the Aboriginal Child, Family and Community Care State Secretariat (NSW) Inc. to meet the requirements of the *Associations Incorporation Act 2009*. As a result, the financial report may not be suitable for another purpose.

A F Wallis & Co.
Chartered Accountants



A F Wallis

Registered Auditor Number: 87922

Dated in Sydney this 22nd day of October 2015